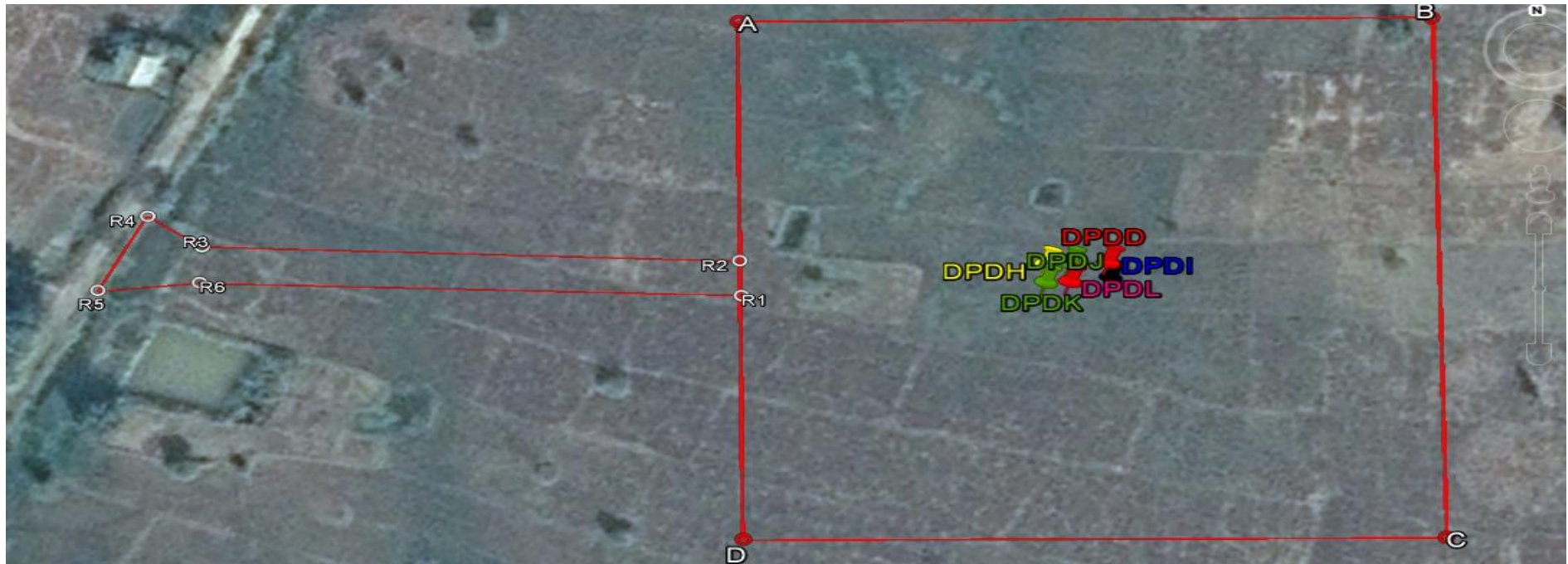


The co-ordinates of six proposed cellar pits, planned to be drilled from common point of DPDD are as follows:



Sl. No	Proposed Cellar Pit Name	Latitude	Longitude	Sl. No.	Co-ordinates of Approach Road	Latitude	Longitude	Sl. No.	Co-ordinates of Boundary points	Latitude	Longitude
1	DPDD	26°13'36.32"N	94° 0'4.26"E	1	R1	26°13'36.23"N	94° 0'1.39"E	1	A	26°13'39.00"N	94° 0'1.46"E
2	DPDJ	26°13'36.33"N	94° 0'4.06"E	2	R2	26°13'36.58"N	94° 0'1.39"E	2	B	26°13'38.85"N	94° 0'7.24"E
3	DPDI	26°13'36.14"N	94° 0'4.25"E	3	R3	26°13'36.87"N	93°59'56.96"E	3	C	26°13'33.64"N	94° 0'7.07"E
4	DPDL	26°13'36.15"N	94° 0'4.05"E	4	R4	26°13'37.19"N	93°59'56.52"E	4	D	26°13'33.81"N	94° 0'1.31"E
5	DPDH	26°13'36.33"N	94° 0'3.86"E	5	R5	26°13'36.46"N	93°59'56.09"E				
6	DPDK	26°13'36.15"N	94° 0'3.85"E	6	R6	26°13'36.51"N	93°59'56.93"E				

Area of DPDD cluster: 2.56Hactares	Area of Approach Road: 0.1686 Hectare	Total Area : 2.7286 Hectares
------------------------------------	---------------------------------------	------------------------------

