

NOT FOR EXPORT

OPEN SERIES MAP

No. **H43K10**
Scale 1:50,000

Grid coordinates: H43K5, H43K9, H43K13, H43K6, H43K10, H43K14, H43K7, H43K11, H43K15

सर्वेक्षण विभाग **SURVEY OF INDIA**

CONVENTIONAL SYMBOLS

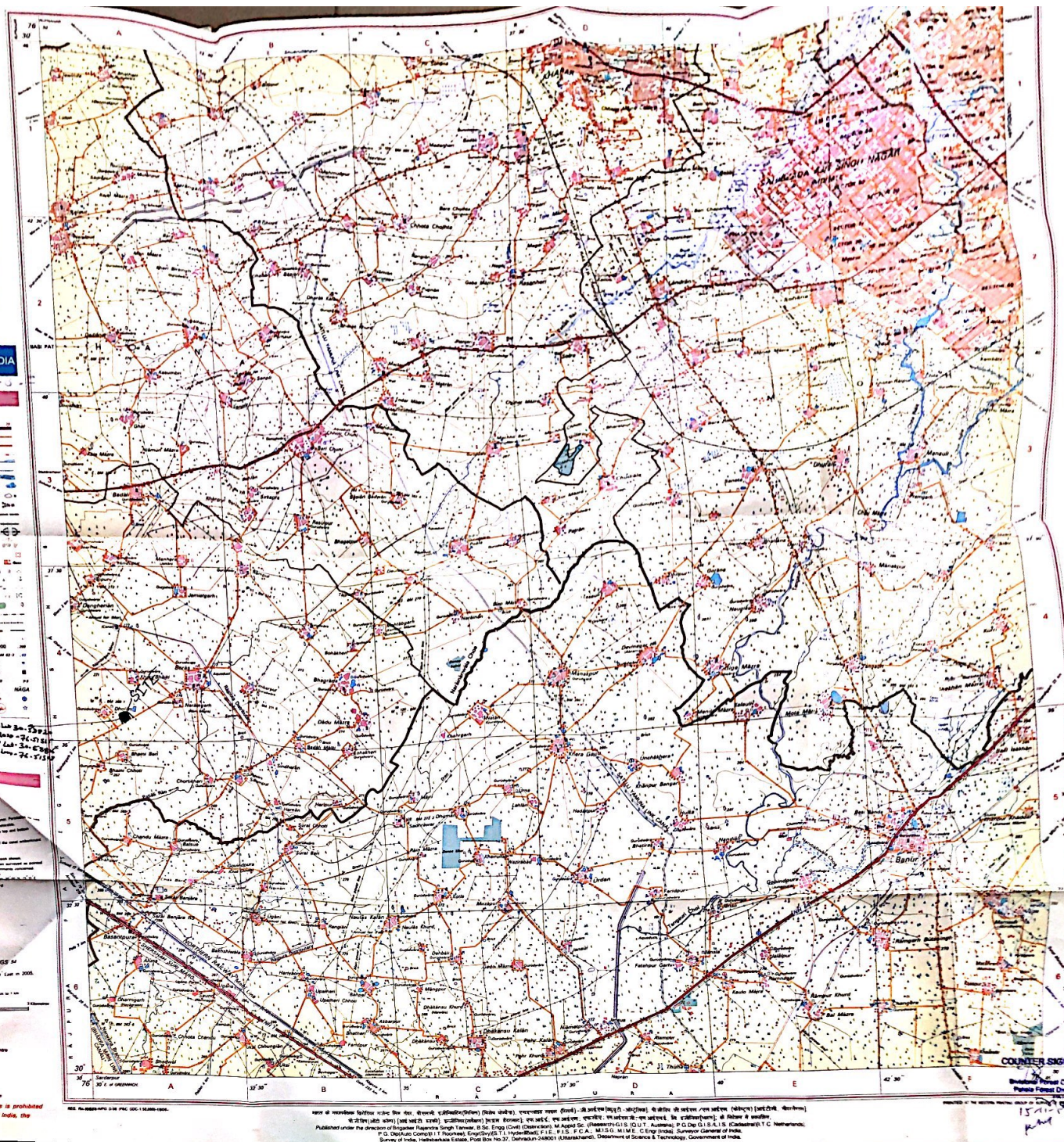
PROJECTION - UTM Datum - WGS 84
Map Scale 1:50,000
Scale bar: 0 to 2 km

REMARKS: This map is a reproduction of the original map and is not to be used for any purpose other than that for which it was prepared.

COMPILED BY: Survey of India

PRINTED BY: Survey of India

DATE: 15/11/2018



Sand features: (1) flat (2) sand-hills (permanent). (3) dunes (shifting)	
Towns or Villages: inhabited; deserted. Fort	
Huts: permanent; temporary. Tower. Antiquities.	
Temple. Chhatri. Church. Mosque. Idgāh. Tomb. Graves	
Lighthouse. Lightship. Buoys: lighted; unlighted. Anchorage	
Mine. Vine on trellis. Grass. Scrub	
Palms: palmyra; other. Plantain. Conifer. Bamboo. Other trees	
Areas: cultivated; wooded. Surveyed tree	
Boundary, international	
" state: demarcated; undemarcated	
" district; subdivision, tahsil or taluk; forest	
Boundary pillars: surveyed; unlocated; village trijunction	
" regulated: station; point; approximate	
" geodetic; tertiary; canal	
Post Office. Telegraph office. Overhead tank	
Rest house or Inspection bungalow. Circuit house. Police station	
Camping ground. Forest: reserved; protected	
Spaced names: administrative; locality or tribal	
Hospital. Dispensary. Veterinary hospital	
Aerodrome. Haltpad. Tourist site	
Power line: with pylons surveyed; with poles unsurveyed	

⑤ Lat. 30.58876 Lon. 76.51314
 ⑥ Lat. 30.58817 Lon. 76.51245
 ⑦ Lat. 30.58776 Lon. 76.51248
 ⑧ Lat. 30.5812 Lon. 76.51314
 ⑨ Lat. 30.58815 Lon. 76.51307
 ⑩ Lat. 30.5882 Lon. 76.51315
 ⑪ Lat. 30.5884 Lon. 76.51309

REFERENCE
 NH 21 National Highway No. 21

NOTES :-

Heights are in metres and above Indian mean sea level.
 Contours are approximate.
 All cart-tracks and unmetalled roads along canals are motorable throughout the year. Permission to use these is required from the Irrigation authorities. Other cart-tracks are generally motorable.
 A relative height . . .8r. represents the approximate height, in metres, between the top and bottom of a steep slope.
 A relative height e.g., .3r, marked along canal, indicates the height of the top of the canal embankment above the adjacent country.
 Tanks, shown dry, in this area usually contain water from July to December.
 Tube-wells are numerous throughout the sheet, only the important ones have been shown.
 The boundary between Union Territory of Chandigarh and Punjab States has been surveyed as pointed out by the local officials on the ground but has not been verified by the Governments concerned.
 The administrative headquarters of Haryana and Punjab States are at Chandigarh.

