

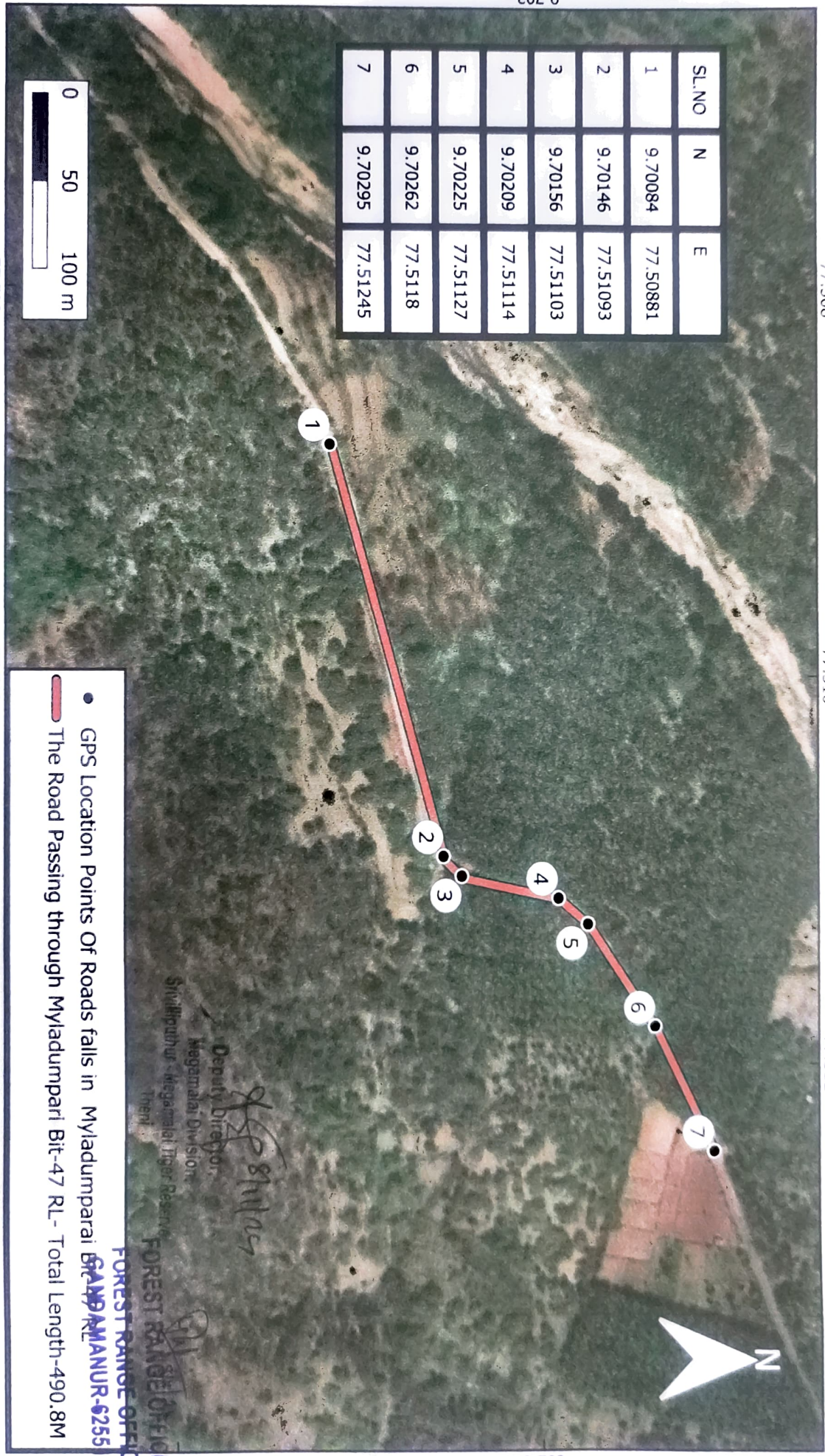
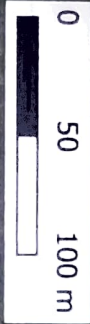
MAP SHOWING THE DIVERSION OF 0.2438 Ha OF FOREST LAND IN MYLADUMPARAI BIT-47 RL IN MEGAMALAI DIVISON, SMTR, FOR UPGRADATION OF ROAD IN VARUSANADU - Via THUMMAKNUDU -VALIPARAI BY NABARD AND RURAL ROADS

77.508

77.510

77.512

SL.NO	N	E
1	9.70084	77.50881
2	9.70146	77.51093
3	9.70156	77.51103
4	9.70209	77.51114
5	9.70225	77.51127
6	9.70262	77.5118
7	9.70295	77.51245



- GPS Location Points Of Roads falls in Myladumparai Bit-47 RL
- The Road Passing through Myladumpari Bit-47 RL - Total Length-490.8M

Deputy Director,
Megamalai Division
Shivallipur - Megamalai Tiger Reserve
Theni

FOREST RANGE OFFICE
SAMPANUR-625517

77.508

77.510

77.512

9.702

9.700