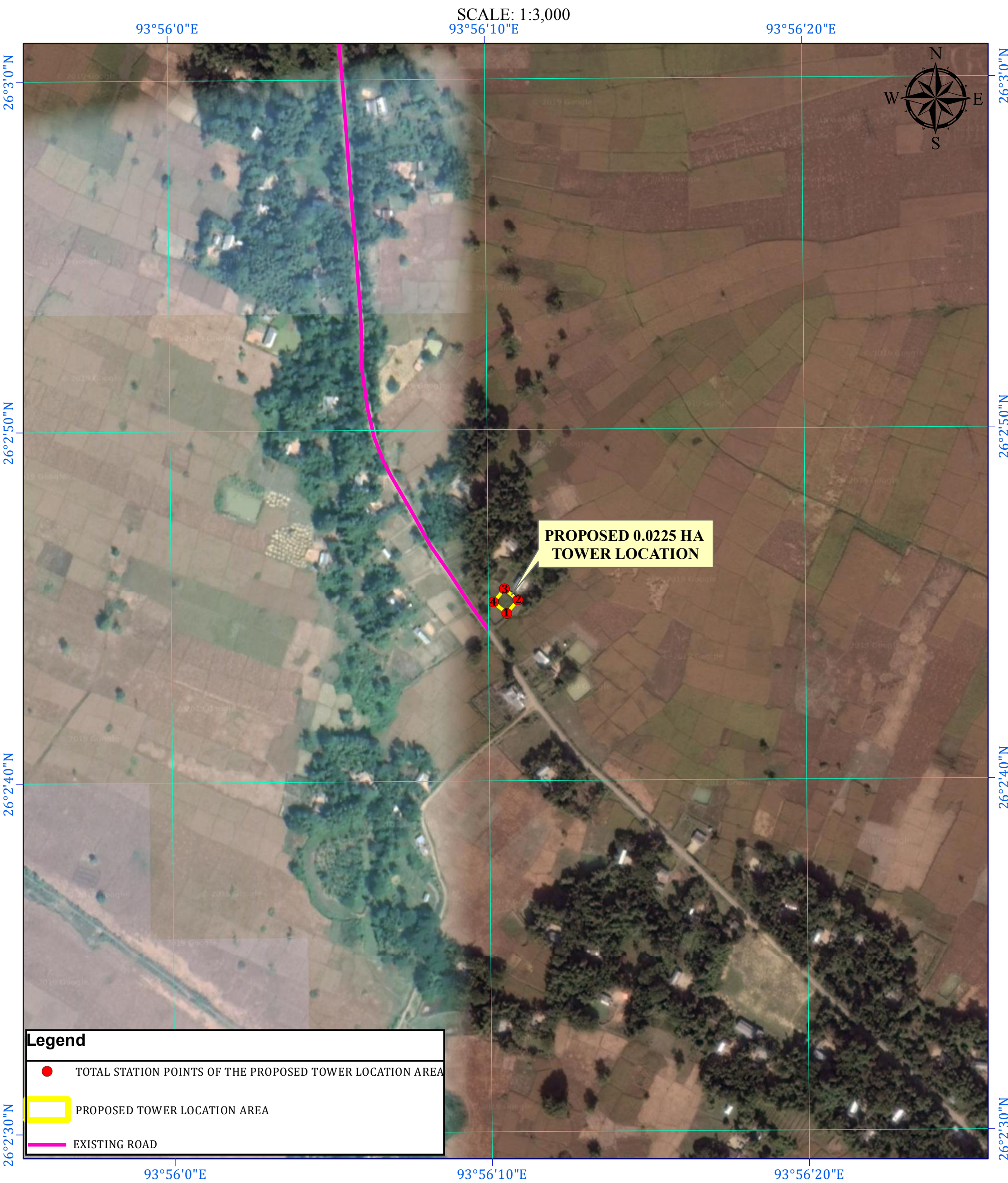


GEO-REFERENCE MAP SHOWING THE PROPOSED 0.0225 HECTARE TOWER LOCATION AREA  
AT JOYAPATHAR NO.2 (UASQ28),  
RENGMA RESERVE FOREST UNDER GOLAGHAT DIVISION



TOTAL STATION COORDINATE READINGS						
TOTAL STATION POINTS	LONGITUDE	LATITUDE	AREA (HA)	NAME OF LOCATION	NAME OF RESERVE FOREST	NAME OF DIVISION
1	93° 56' 10.466" E	26° 2' 44.776" N	0.0225	JOYAPATHAR NO.2 (UASQ28)	RENGMA RESERVE FOREST	GOLAGHAT DIVISION
2	93° 56' 10.819" E	26° 2' 45.144" N				
3	93° 56' 10.412" E	26° 2' 45.463" N				
4	93° 56' 10.058" E	26° 2' 45.095" N				