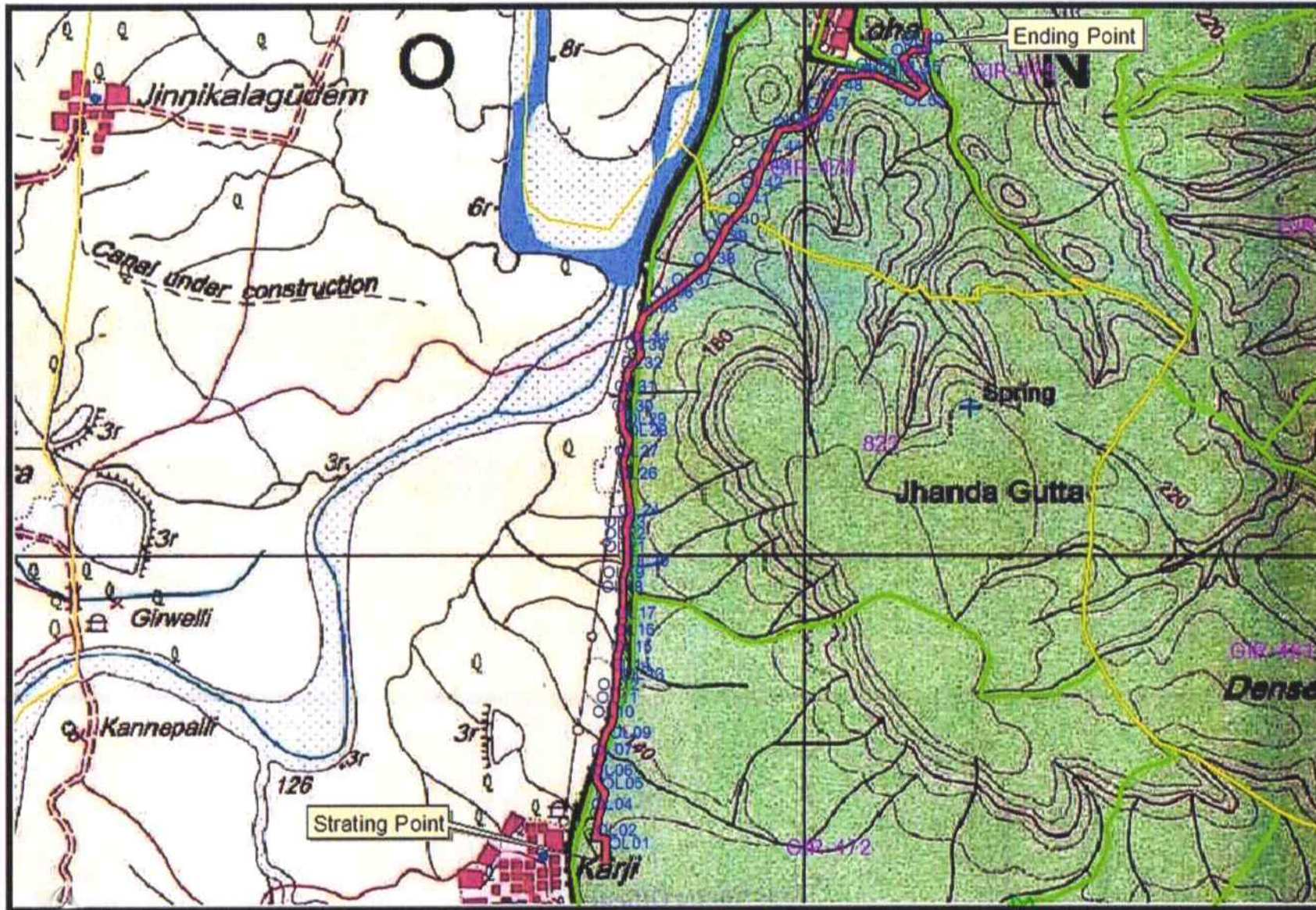


Map Showing the Proposal for Diversion of 2.4746 Ha forest land for Construction of BT Road Kharji to Loha RF Girivelly of Kharji and Loha Rebbena Beat of Section Kharji and Rampur in Rebbena Range of Asifabad Division.



Legend

- DGPS Surveyed Points
- Reserve Forest area
Length 4499.34 Mts
width 5.50 M 2.4746 Ha
- ▭ Compt Boundary
- ▭ Section Boundary
- ▭ Range Boundary

Forest Divisional Officer
ASIFABAD.

[Signature]
Forest Range Officer
REBBENA

SI No	Name of the Range	Name of the Beat	Compt No	Name of the RF	Proposed diversion area as per DGPS Map by PCCF Hyderabad			Area as per field verification by FRO			Remarks Area forever	
					Length in M	Width in M	Area in Ha	Length in M	Width in M	Area in Ha		
1	2	3	4	5	6	7	8	9	10	11	12	
1	Rebbena	Kharji	472	Girelli	4499.34	7.5	3.3745	4499.34	5.50 mtr	2.4746		
2		Kharji	823					1160.10			Corridor	
3		Loha rebbena	474						1896.13			Corridor
Total					4499.34		3.3745	4499.34		2.4746	Corridor	

SL.NO.	LATITUDE	LONGITUDE
OL01	19.19660	79.82526
OL02	19.19717	79.82521
OL03	19.19737	79.82467
OL04	19.19820	79.82485
OL05	19.19902	79.82512
OL06	19.19957	79.82493
OL07	19.20040	79.82505
OL08	19.20109	79.82519
OL09	19.20139	79.82526
OL10	19.20190	79.82547
OL11	19.20248	79.82562
OL12	19.20303	79.82581
OL13	19.20341	79.82586
OL14	19.20382	79.82578
OL15	19.20452	79.82585
OL16	19.20519	79.82593
OL17	19.20589	79.82599
OL18	19.20693	79.82602
OL19	19.20753	79.82602
OL20	19.20798	79.82607
OL21	19.20857	79.82601
OL22	19.20910	79.82612
OL23	19.20955	79.82612
OL24	19.21002	79.82614
OL26	19.21150	79.82605
OL27	19.21239	79.82608
OL28	19.21321	79.82606
OL29	19.21370	79.82592
OL30	19.21424	79.82589

SL.NO.	LATITUDE	LONGITUDE
OL31	19.21502	79.82600
OL32	19.21594	79.82624
OL33	19.21670	79.82644
OL34	19.21740	79.82660
OL35	19.21822	79.82690
OL36	19.21876	79.82754
OL37	19.21930	79.82829
OL38	19.22013	79.82919
OL39	19.22104	79.82968
OL40	19.22171	79.83013
OL41	19.22256	79.83072
OL42	19.22319	79.83107
OL43	19.22394	79.83136
OL44	19.22467	79.83186
OL45	19.22558	79.83234
OL46	19.22584	79.83309
OL47	19.22636	79.83371
OL48	19.22712	79.83425
OL49	19.22772	79.83483
OL50	19.22793	79.83536
OL51	19.22785	79.83618
OL52	19.22736	79.83710
OL53	19.22712	79.83768
OL54	19.22735	79.83780
OL55	19.22782	79.83737
OL56	19.22851	79.83725
OL57	19.22881	79.83757
OL58	19.22880	79.83796
OL59	19.22945	79.83800


 Forest Range Officer
 REBBENA