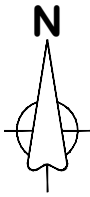
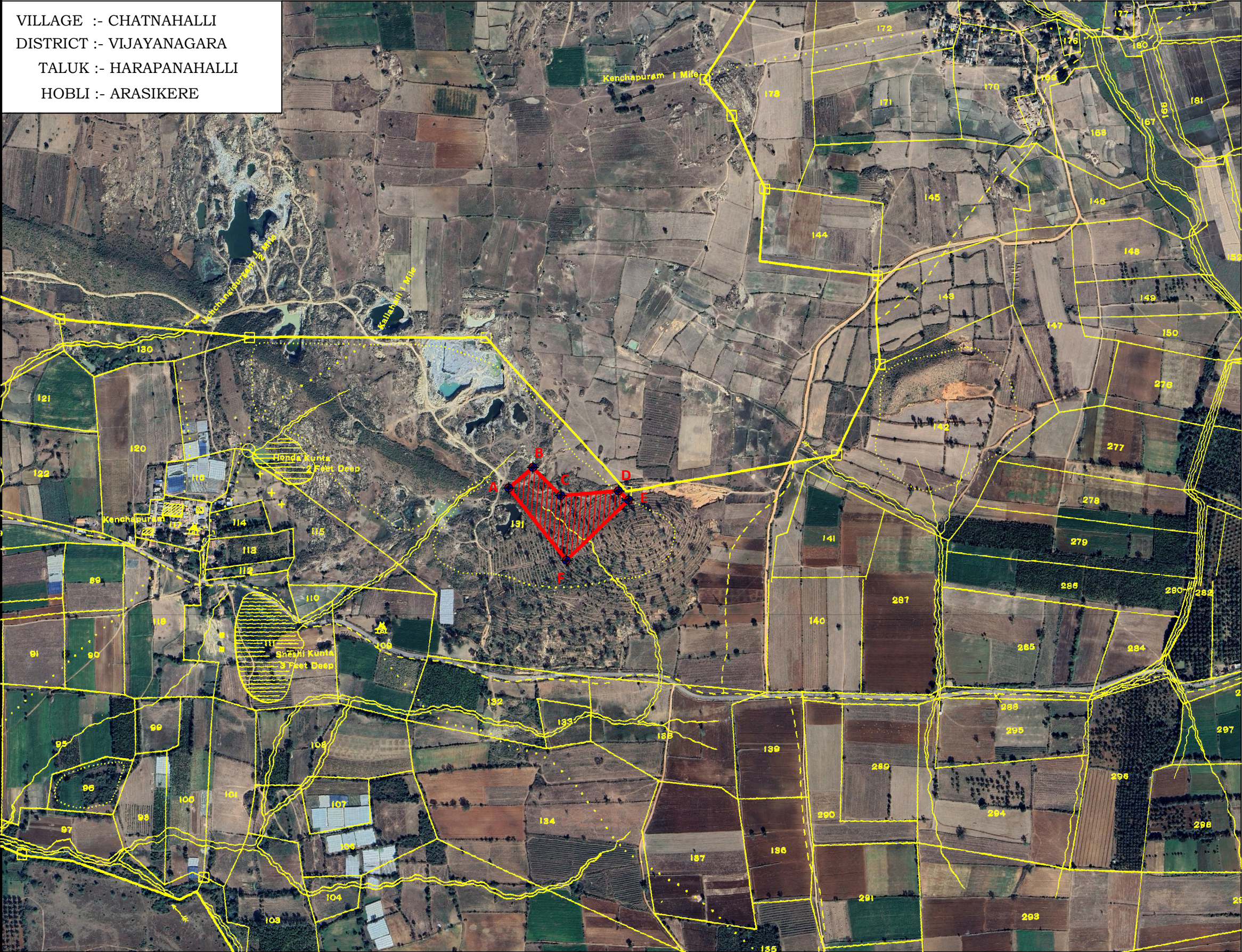


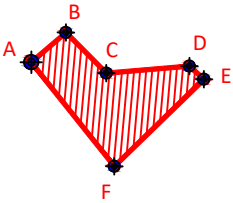
GOOGLE LOCATION MAP OF RAISING COMPENSATORY AFFORESTATION AREA ALLOTTED IN C & D LAND

VILLAGE :- CHATNAHALLI  
DISTRICT :- VIJAYANAGARA  
TALUK :- HARAPANAHALLI  
HOBLI :- ARASIKERE



Scale :- 1"=20 Chain  
(1CM=79.20 Mtr)  
(1CHAIN=20.0 Mtr)

INDEX



AREA ALLOTTED IN C & D  
LAND

PROJECT :- WATER PIPELINE PROJECT  
APPLICANT :- M/s MSPL LIMITED & AISL  
HOSPETE.  
CA EXTENT :- 1.84 Ha  
SURVEY NO :- 131/BP1  
TOPOSHEET NO :- PART OF 57-B-2

TOPOSHET NO-57-B-2			
CHATNAHALLI VILLAGE			
GPS Co-ordinates			
Datum - WGS84 (Lat/Lon hddd°mm' ss.s")			
Sl No	Points	Latitude	Longitude
1	A	N14° 31' 42.0"	E76° 02' 33.5"
2	B	N14° 31' 43.3"	E76° 02' 35.1"
3	C	N14° 31' 41.5"	E76° 02' 36.9"
4	D	N14° 31' 41.8"	E76° 02' 40.7"
5	E	N14° 31' 41.2"	E76° 02' 41.4"
6	F	N14° 31' 37.4"	E76° 02' 37.3"

for AARESS IRON AND STEEL LIMITED,

Authorized Signatory