

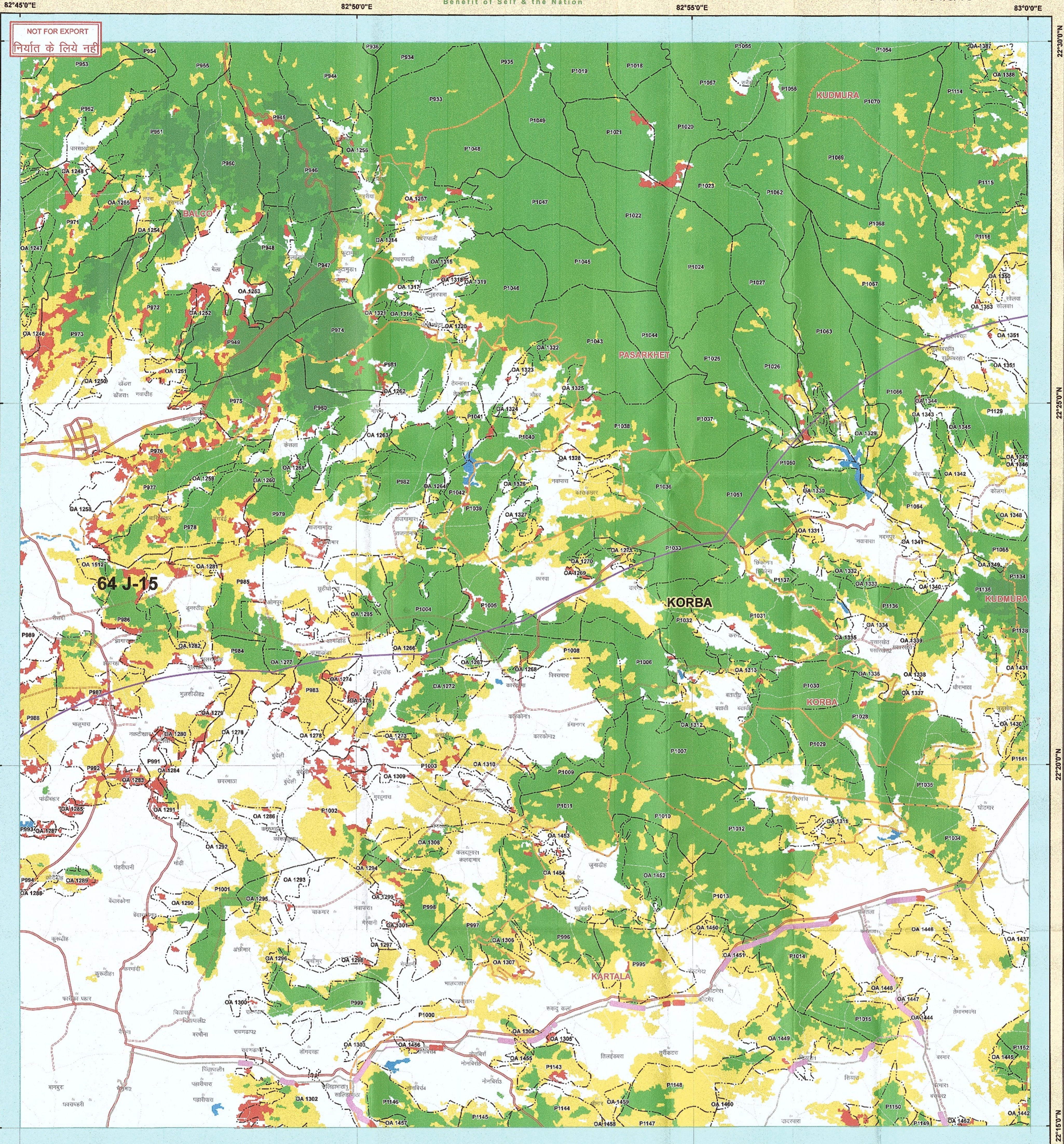
Chhattisgarh Forest Department Forest Cover Map Sheet. No. 64 J 15

वन आवरण मानचित्र

मानचित्र स्केल 1 :50000

Save Trees, Save Forests and Save Wildlife for the
Benefit of Self & the Nation

टोपो शीट न. - 64/J/15



82°45'0"E 82°50'0"E 82°55'0"E 83°0'0"E

उप वन अधिकारी
राज्य वन संरक्षण विभाग

वन परिक्षेत्राधिकारी
कोरबा परिक्षेत्र-कोरबा

वन परिक्षेत्राधिकारी
कुदमुरा परिक्षेत्र, कुदमुरा

Legend

	ROAD_TYPE		PROTECTED AREA
	Metalled Road		FOREST RANGE REGION
	UnMetalled Road		COMPARTMENT REGION
	DGPS_Revenue_Forest		TOWN / VILLAGE
	DGPS_Forest_Route	Class_Name	
	DGPS_Revenue_forest_Area		Moderately Dense Forest
	DGPS_Forest_Area		Non-Forest
	DGPS_Proposed OFC Line		Open Forest
	10KMBUFFER		Scrub
	FOREST DIVISION REGION		Very Dense Forest
			Water

MAP PREPARED BY
Programmer/Asstt. Programmer
Name: P. S. J. Kumar, A. H.
Signature: _____

MAP PREPARED FOR:-
JCEO,
Chhattisgarh Infotech Promotion Society CHIPS,
2nd Floor, SDC Building, Civil Line,
Raipur (C.G.)

REG.No. :- FP/CG/OFC/43122/2019

वन परिक्षेत्राधिकारी
कोरबा परिक्षेत्र, कोरबा

विषय :- भारत सरकार की महत्वपूर्ण योजना "भारतनेट प्रोजेक्ट" के तहत सफल संयुक्त मुख्य कार्यपालन अधिकारी, छत्तीसगढ़ इन्फोटेक प्रमोशन सोसाइटी (चिप्स), रायपुर छ.ग. द्वारा कोरबा जिला के कोरबा वनमण्डल अंतर्गत शामिल ग्राम पंचायत के मार्ग समानांतर वनभूमि रकबा 4.043 हे. पर ऑप्टिकल फायबर केबल बिछाने हेतु वन संरक्षण अधिनियम 1980 अंतर्गत व्यवर्तन प्रस्ताव हेतु वनस्पति मानचित्र बावत।

Note :- Shapfile provided by user agencies.

82°45'0"E 82°50'0"E 82°55'0"E 83°0'0"E

Sheet to Index
Data Source:- 1. Compartment Boundary from Stock Map
2. Forest Cover Based on Digital Interpretation of Data Period Oct 2015 to Dec 2015 LUS-III from Resourcesat-2 and IRS-P6 (Resourcesat-1) FSI Report 2017.
3. General Features are based on SSI Digital Data (Scale 1: 50,000) and Chhattisgarh GeoDatabase.

Source:- FOREST SURVEY OF INDIA FOREST COVER CLASSIFICATION SCHEME.
Very Dense Forest:- All land with tree cover (including Mangrove cover) of canopy density of 70% and above.
Moderately Dense Forest:- All land with tree cover (including Mangrove Cover) of canopy density between 40% and 70% above.
Open Forest:- All land with tree cover (including Mangrove Cover) of canopy density between 10-40%.
Scrub:- All forest lands with poor tree growth mainly of small or stunted trees having canopy density less than 10%.
Non Forest:- Any Area not included in the above classes.

चनमण्डलाधिकारी,
कोरबा वनमण्डल, कोरबा

International Day of Forests
21 March

SCALE 1:50000

0 0.5 1 2 3 4 Kilometers

TOPPO SHEET NO. 64 J 15

Prepared and Printed by:- GIS Cell
Forest Management Information System Division, Raipur