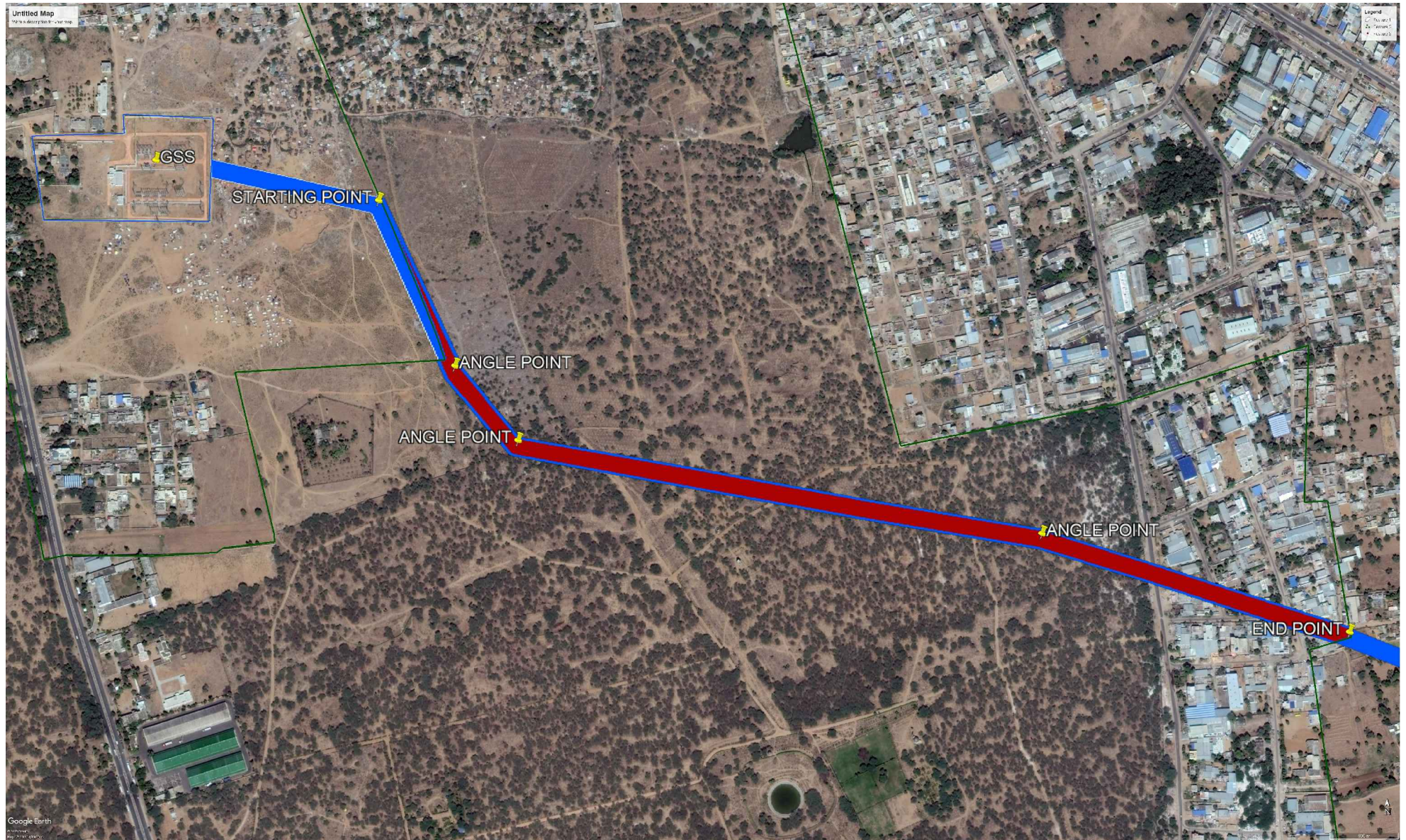


**PROPOSED FOREST LAND / PHED LAND (BY MUTATION ON 24.01.2013) DIVERSION FOR UPRATING OF 132 KV S/C LINE FROM 132 KV GSS SANWALI ROAD, WATER WORKS, SIKAR TO 132 KV GSS RANOLI (WITH DISMANTLING OF EXISTING 132 KV LINE) ON MAP BEER DEVIPURA (FOREST LAND / PHED LAND) KASBA / VILLAGE - SIKAR, RANGE- SIKAR, DIVISION - SIKAR, TEHSIL & DISTRICT-SIKAR (RAJ)
 APPLIED BY : EXECUTIVE ENGINEER (T&C) , RRVPNL , SIKAR (RAJASTHAN) ONLINE PROPOSAL No- FP/RJ/TRANS./36179 / 2018 DATE- 26 / 09 / 2018**



INDEX		
S. NO.	PARTICULARS	SYMBOL
1	FOREST LAND (FOREST BLOCK LINE)	
2	NON FOREST LAND	
3	PROPOSED FOREST LAND / PHED LAND (BY MUTATION ON 24.01.2013) DIVERSION FOR UPRATING OF 132 KV S/C LINE FROM 132 KV GSS SANWALI ROAD, WATER WORKS, SIKAR TO 132 KV GSS RANOLI (WITH DISMANTLING OF EXISTING 132 KV LINE) ON GEO.REFERENCE MAP BEER DEVIPURA (FOREST LAND / PHED LAND) KASBA / VILLAGE - SIKAR, DN, SIKAR DISTT, SIKAR TOTAL AREA = 39836 SQ.Meter OR 3.9836 HECT.	

GPS COORDINATE OF UPRATING OF 132 KV S/C LINE IN DEVIPURA BEER P.F. WATER WORKS SANWALI-RANOLI LINE	
STARTRING POINT	A1- 27°35'39.16"N, 75° 8'56.01"E A2- 27°35'31.46"N, 75° 8'59.16"E
ANGLE POINT	B1- 27°35'31.12"N, 75° 9'00.39"E B2- 27°35'30.58"N, 75° 8'59.60"E
ANGLE POINT	C1- 27°35'27.79"N, 75° 9'03.45"E C2- 27°35'27.01"N, 75° 9'03.04"E
ANGLE POINT	D1- 27°35'23.45"N, 75° 9'31.37"E D2- 27°35'22.61"N, 75° 9'31.11"E
END POINT	E1- 27°35'18.87"N, 75° 9'47.67"E E2- 27°35'18.17"N, 75° 9'46.87"E

(J. P. Khichar)
 Executive Engineer (T&C)
 R.R.V.P.N.L., Sikar
Signature of Applicant