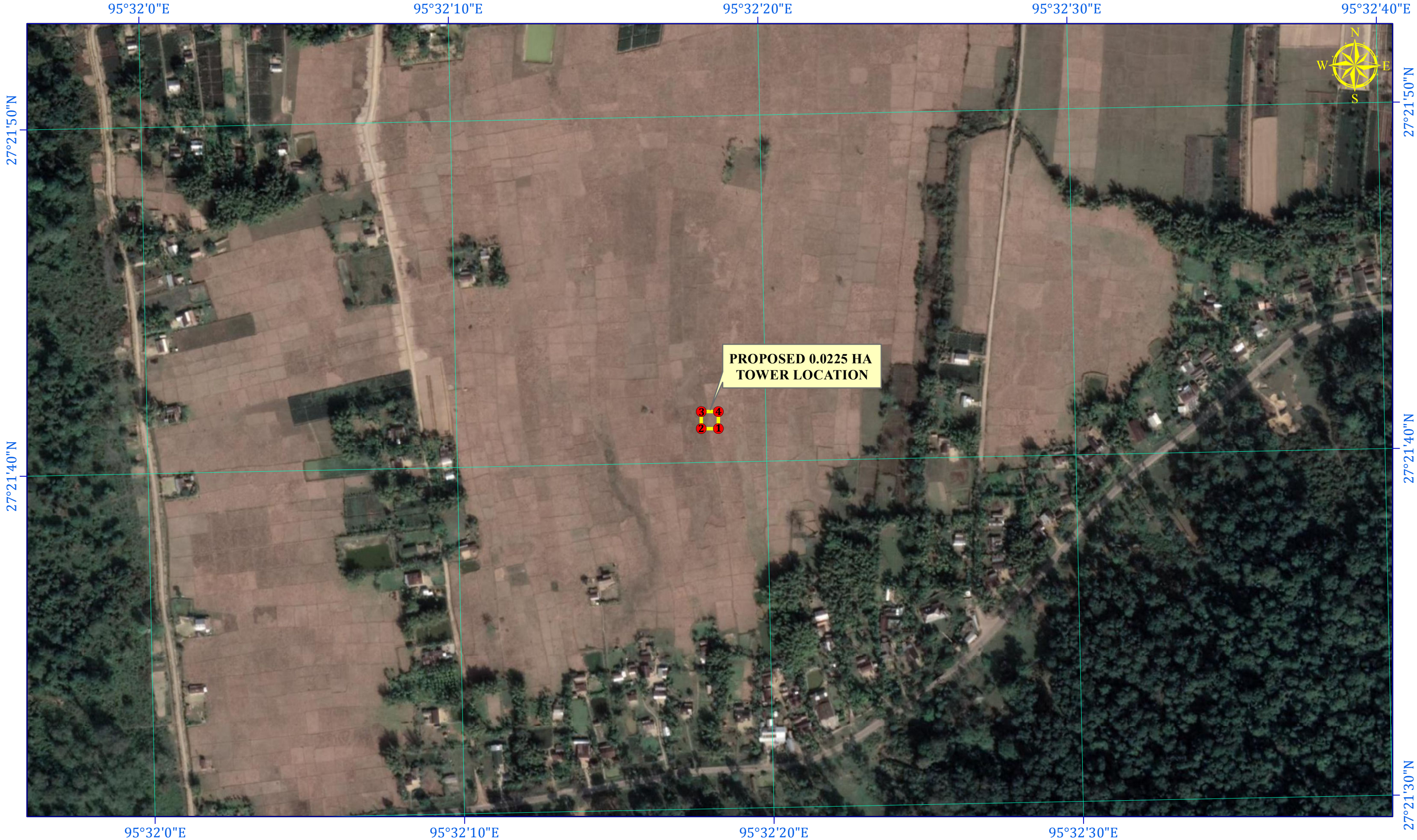


GEO-REFERENCE MAP SHOWING THE PROPOSED 0.0225 HECTARE I-AS-TNSK-ENB-9105 TOWER LOCATION AREA AT  
UPPER DIHING (WB) RESERVE FOREST UNDER DIGBOI DIVISION

SCALE: 1: 3,000



**Legend**

TOTAL STATION POINTS OF THE PROPOSED TOWER LOCATION AREA

PROPOSED TOWER LOCATION AREA

TOTAL STATION COORDINATE READINGS						
TOTAL STATION POINTS	LONGITUDE	LATITUDE	AREA (HA)	NAME OF LOCATION	NAME OF FOREST AREA	NAME OF FOREST DIVISION
1	95° 32' 18.435" E	27° 21' 40.972" N	0.0225	I-AS-TNSK-ENB-9105	UPPER DIHING (WB) RESERVE FOREST	DIGBOI DIVISION
2	95° 32' 17.890" E	27° 21' 40.981" N				
3	95° 32' 17.901" E	27° 21' 41.468" N				
4	95° 32' 18.446" E	27° 21' 41.459" N				