

MAP SHOWING GEO-REFERENCED SURVEY OF INDIA TOPOSHEET WITH PROPOSED ALIGNMENT IN FOREST AND NON FOREST AREA
 Project Name : Construction of Intake Well with Pump House, MCC Room, Raising Main Pipeline, Approach Road and HT Transmission Line in Area of Baisasing Dam District-Sirohi, Rajasthan
 Proposal No. : FP/RJ/WATER/145797/2021 (Applied Area : 3.6975 Hectare)



No. G43S11

Scale 1:50,000

4 G43S6 (45D/6)	5 Sirohi RAJASTHAN G43S10 (45D/10)	G43S14 (45D/14)
G43S7 (45D/7)	G43S11 (45D/11) Banās Kāntha GUJARAT	G43S15 (45D/15)
G43S8 (45D/8)	G43S12 (45D/12)	G43S16 (45D/16)

1 Pātan, GUJARAT. 2 Mehsāna, GUJARAT. 3 Sābar Kāntha, GUJARAT. 4 Jālor, RAJASTHAN.

भारतीय सर्वेक्षण विभाग SURVEY OF INDIA

1st Edition 2011. Price : Rs. 70/-

CONVENTIONAL SYMBOLS

Express highway, with toll, with bridge, with distance stone		20
Roads, metalled, according to importance		
Roads, double cartway, according to importance		
Unmetalled road, Cart-track, Pack-track with pass, Foot-path		
Streams, with track in bed, undefined, Canal		
Dams, masonry or rock-filled, earthwork, Weir		
River, dry with water channel, with island & rocks, Tidal river,		
Submerged rocks, Shoal, Swamp, Reeds		
Wells: lined, unlined, Tube-well, Spring, Tanks: perennial, dry		
Embankments: road or rail, tank, Broken ground		
Railways, broad gauge: double, single with station, under constn		
Railways, other gauges: double, single with distance stone, do		
Mineral line or tramway, Kin, Cutting with tunnel		
Contours with sub-features, Rocky slopes, Cliffs		
Sand features (1) flat, (2) sand-hills(permanent), (3) dunes(shifting)		
Towns or Villages: inhabited, deserted, Fort		
Huts: permanent, temporary, Tower, Antiquities		
Temple, Chhatra, Church, Mosque, Jāgāh, Tomb, Graves		
Lighthouse, Lightship, Buoy: lighted, unlighted, Anchorage		
Mine: Vein on talis, Grass, Scrub		
Palms: palmyra, other, Plantain, Coriander, Bamboo, Other trees		
Areas: cultivated, wooded, Surveyed tree		
Boundary, international		
state: demarcated, undemarcated		
district, subdivision, taluk or taluk, forest		
Boundary pillars: surveyed, unlocated		
Heights, triangulated: station, point, approximate		200 .200 .200
Bench-mark: geodetic, tertiary, canal		BM 63-3 .BM 63-3
Post office, Overhead tank		
Rest house or inspection bungalow, Circuit house, Police station		
Camping ground, Forest: reserved, protected		RF PF
Spaced names: administrative, locality or tribal		KIKRI NAGA
Hospital, Dispensary, Veterinary, Hospital / Dispensary		
Aerodrome: Helipad, Tourist site		
Power line: with pylons surveyed, with poles unsurveyed		

REFERENCE

NH 14 National Highway No. 14.

NOTES :-

Heights are in metres and above Indian mean sea level.
 Contours are approximate.
 A relative height, *sr*, represents the approximate height, in metres, between the top and bottom of a steep slope.
 The triangulated heights and contours in this sheet have not been adjusted to the heights of the spirit-levelled bench-marks and may not be strictly in accordance with them but the discrepancy is unlikely to exceed 2 metres.
 Tanks, shown dry, in this area, usually contain water from July to September.
 Cart-tracks in this sheet are generally motorable (four-wheel drive).
 Distance stones along the railway are in miles.

COMPILATION INDEX

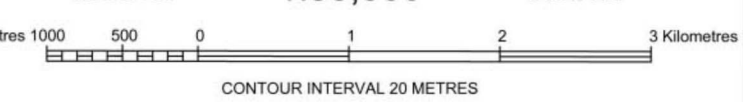
A. Surveyed during 1959-60. Updated for major details during 2005-06.



Projection - UTM Datum - WGS 84

Magnetic Variation from True North about 0' in 2005.

1:50,000



CONTOUR INTERVAL 20 METRES

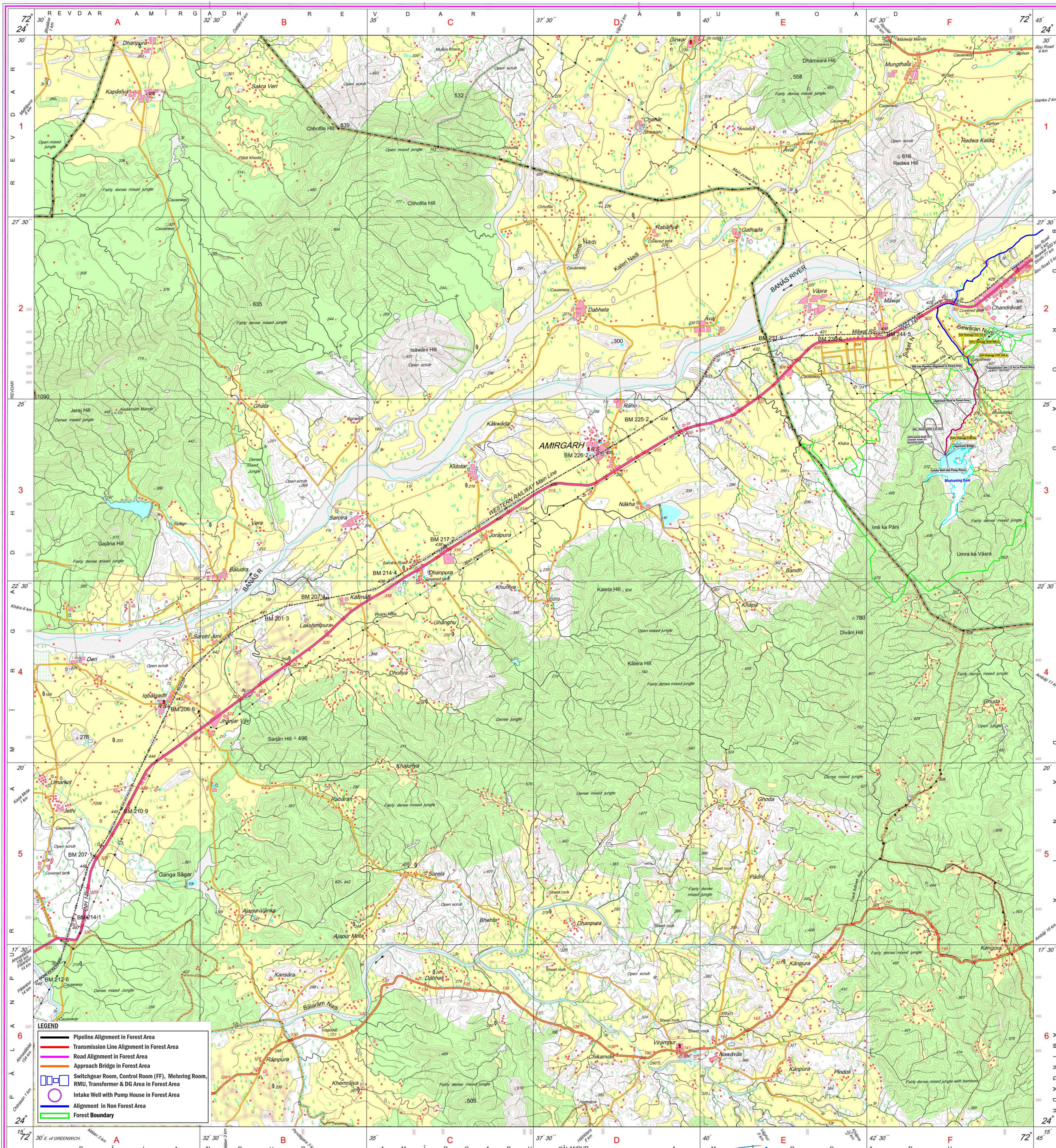
For further details about this map, please contact

Director
 Gujarat, Damān & Diu Geo-Spatial Data Centre
 Survey of India, Sector 10(A)
 Gāndhinagar.

WEBSITE - www.surveyofindia.gov.in

Reproduction in whole or part by any means is prohibited without the written permission of Survey of India, the National Mapping Agency.

GOVERNMENT OF INDIA COPYRIGHT, 2011.



REG. No. SPG D11 (GDND GDC:1:50,000)

भारत के महारक्षक, स्वर्ण सूत्र राव, बी०ई०,के निवेदन में प्रकाशित,
 Published under the direction of Swarna Subba Rao, B.E. Surveyor General of India,
 Survey of India, Hāthibarkala Estate, Post Box No.37, Dehra Dūn-248001 (Uttarakhand)
 Department of Science & Technology, Government of India.

सहायक अभियन्ता
P.H.E.D., उपखण्ड
 आंचलिक (राज.)

PRINTED AT THE SOUTHERN PRINTING GROUP OF SURVEY OF INDIA.