

MUCK DISPOSAL MANAGEMENT PLAN
FOR

Engaging Technical Consultant for Preparation of Feasibility Study (FS) and Detailed Project Report (DPR) On EPC Mode for Widening Improvement of Proposed Alignment *MAHADEV-TOLOI-PFUTSERO ROAD SECTION-I* start point from Ukhrul District Hospital Chainage from km 0.000 to km 89.400 in Ukhrul District and km 89.400 to km 108.100 in Senapati district in the state of Manipur Under project SEWAK.

APPLICANT BY
OFFICER COMMANDING
84 RCC (GREF) UKHRUL

Muck Disposal / Dumping Plan

1. Project Description

Border Road Organisation (BRO) – Project Sewak in state of Manipur and Nagaland has been entrusted Consultant for preparation of Feasibility Study (FS) and Detailed Project Report (DPR) on EPC mode for widening/improvement of existing road from Km 0.00 to Km 15.00 to NHDL Specifications and from Km 15.00 to Km 135.00 (As per CA) to Intermediate Carriageway (IW specifications) of road Mahadev – Tolo - Pfutsero (total length 135.00 Km) in Ukhrul & Senapati Dist. of Manipur State and Phek Dist. of Nagaland State under Project Sewak. The Detailed Project Report thus prepared shall contain the scheme and layout of the development of the highway and the project facilities, preliminary design, costing and financial viability based on present and future traffic. The Detailed Project Report would thus provide all technical details, based on which comprehensive bid document can be prepared so that realistic bids are received from prospective bidders.

The project road takes off Distt. Hospital, Ukhrul town located at Dungrei village locality and following green field alignment from starting point (outside of the Ukhrul Town) to near about 84 RCC. Then following existing road upto Ukhrul- jessami road junction (NH-150), then again following green field alignment upto Langdhang river (samsai river), then meet to Halang village junction by following green field alignment, then following existing road which is already being constructed by state Govt. under PMGSY from Talui village junction to peh village, then following green field alignment outside of the peh village. Then following existing alignment road from peh village to mother reach of Hill. Then following green field alignment along the Laini Lok river from Bailey Bridge and Bypass the chingjaroi C.V., chingjaroi Khullen and also Laii & New Laii Village

2. Estimated Muck / Debris Generation.

The up gradation of the road is along the existing alignment and widening is from e single lane (average 7 m wide carriage way) to intermediate lane (5.5m wide carriage way). The estimated the generation of muck/debris due to road widening up gradation, after utilization of excavated earth/rock materials in construction of embankment and subgrade for widening portions of road is considerably less and estimated to be 2687776 cum.

3. Reuse of Muck/Debris

The project proposal includes a comprehensive proposal to re-use the muck/debris by construction of toe walls at low lying areas but within right of way along the road and reclaim such areas. All such low lying areas reclaimed will be developed into green areas through nature base (Bio-Engineering) solutions.

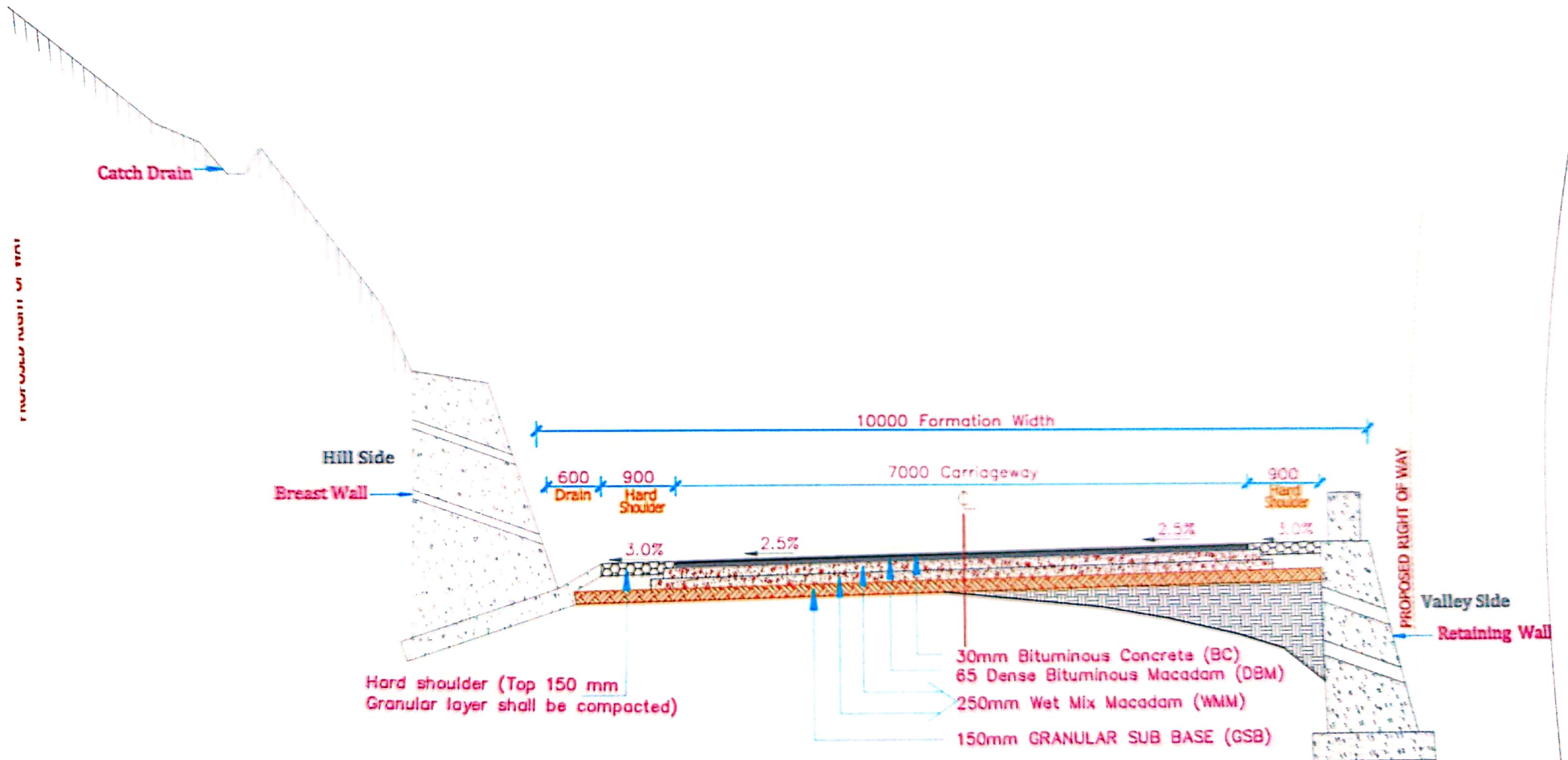
4. Muck/Debris Disposal Locations

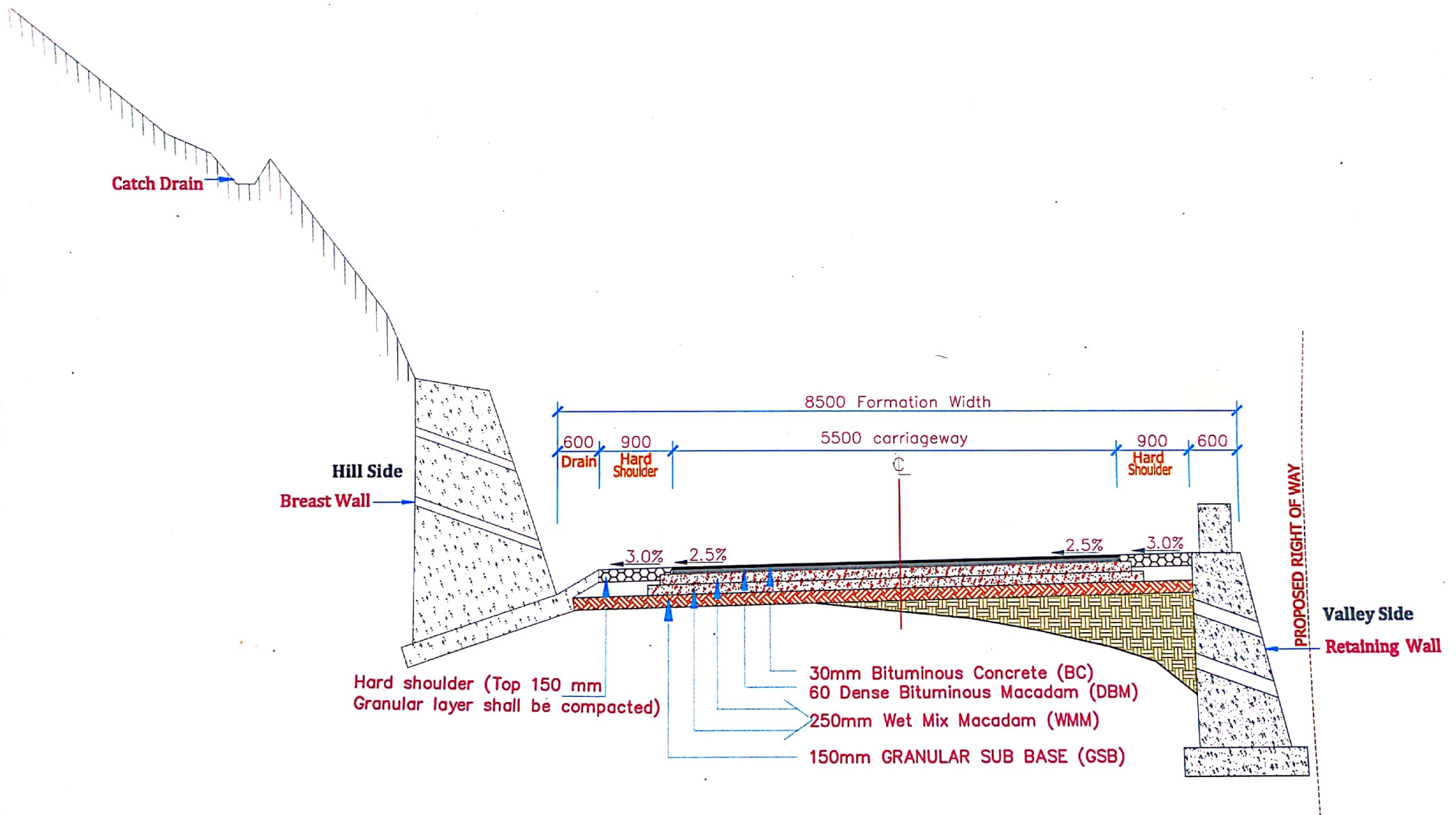
The locations identified for muck disposal/debris as a part of the project preparation (DPR) is given in Table 1 hereunder and meets the requirements for the disposal of complete quantity of muck/debris disposal due to road widening activities under this project

Table1: Potential Locations identified for Muck/Debris Disposal

S.No	Start Chainage From (Km)	End Chainage To (Km)	Length (m)	Width (m)	Depth (m)	Quantity (Cum.)	Side (Hill /Valle y)	Type of Land	Latitude (N)	Longitude (E)	Latitude (N)	Longitude (E)
									For Start Chainage		For End Chainage	
Ukhrul District km 0.00 to Km 89.400												
1	1+700	1+900	200	70	4	54419	Valley	Forest Land	25° 4'46.19"	94° 21'46.78"	25° 4'44.15"	94° 21'53.27"
2	6+865	7+000	135	100	8	105666	Valley	Forest Land	25° 6'3.04"	94° 22'24.77"	25° 6'6.94"	94° 22'25.73"
3	12+920	13+020	100	140	21	290426	Valley	Forest Land	25° 8'35.47"	94° 22'56.04"	25° 8'38.53"	94° 22'57.43"
	24+840	25+040	200	73	22	324507	Valley	Forest Land	25° 10'36.77"	94° 23'17.50"	25° 10'36.42"	94° 23'13.19"
5	34+210	34+380	170	85	10	140134	Valley	Forest Land	25° 10'41.55"	94° 21'30.15"	25° 10'45.46"	94° 21'29.68"
6	37+710	37+860	150	100	9	129508	Valley	Forest Land	25° 12'14.82"	94° 21'52.49"	25° 12'18.52"	94° 21'55.61"
7	45+210	45+385	175	75	13	174869	Valley	Forest Land	25° 14'30.96"	94° 23'40.03"	25° 14'33.99"	94° 23'45.13"
8	59+610	59+810	200	70	27	372397	Valley	Forest Land	25° 20'11.64"	94° 24'32.52"	25° 20'7.68"	94° 24'26.91"
9	72+710	72+900	190	70	33	433772	Valley	Forest Land	25° 22'49.28"	94° 22'43.05"	25° 22'55.11"	94° 22'42.35"
10	86+910	87+100	190	70	26	348574	Valley	Forest Land	25° 27'48.07"	94° 25'21.02"	25° 27'52.84"	94° 25'25.39"
Senapati District km 89.400 to Km 108.100												
11	103+400	103+580	180	80	22	313504	Valley	Forest Land	25° 32'14.58"	94° 25'25.34"	25° 32'9.12"	94° 25'26.82"
Total quantity (in Cum)						2687776						

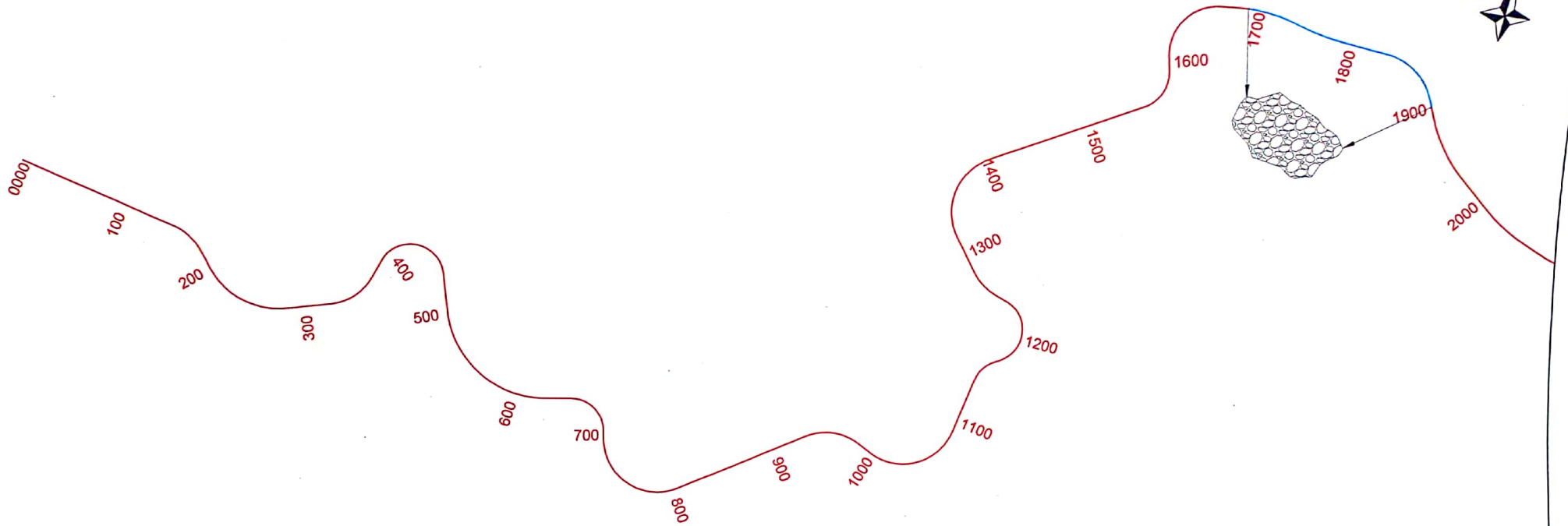
Abhishek Goel
 (Abhishek Goel)
 EE (Civ)
 Officer Commanding
 84 RCC (GREF)





UKHRUL

CHIZAMI



ROAD NAME :- MAHADEV - TOLOI - PFUTSERO

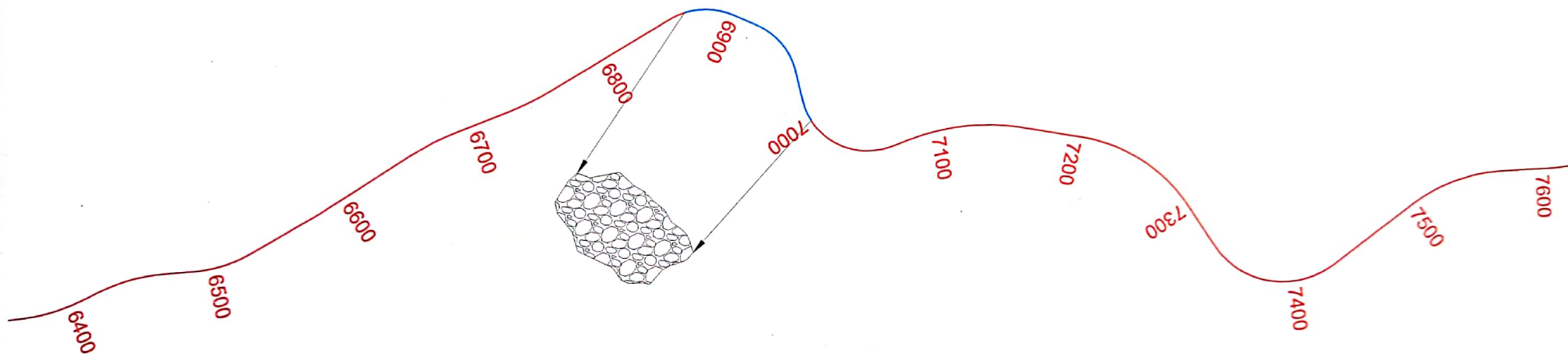
MUCK DUMPING PLAN

>>> LEGENDS >>>

PROPOSED CL	—
PRO. CHAINAGE	0+000
MUCK DUMPING LOCATION	

UKHRUL

CHIZAMI



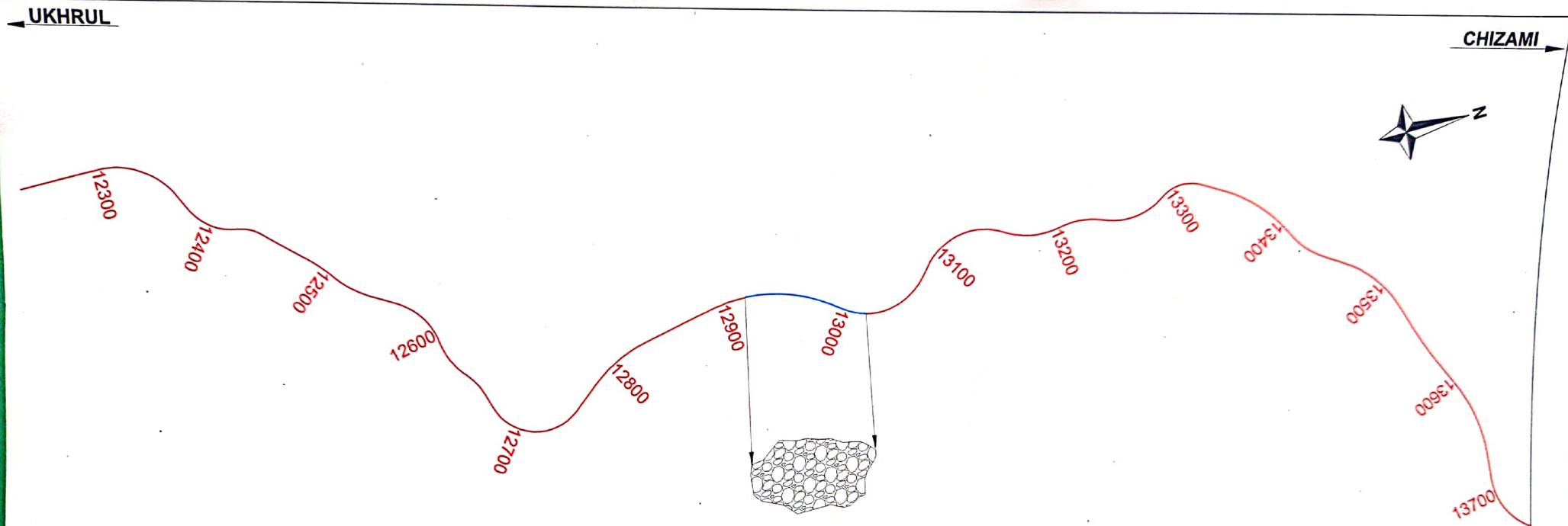
S.No	Start Chainage From (Km)	End Chainage To (Km)	Length (m)	Width (m)	Depth (m)	Quantity (Cum.)	Side (Hill /Valley)	Type of Land	Latitude (N)	Longitude (E)	Latitude (N)	Longitude (E)
									For Start Chainage		For End Chainage	
2	6+865	7+000	135	100	8	105666	Valley	Forest Land	25° 6'3.04"	94° 22'24.77"	25° 6'6.94"	94° 22'25.73"

ROAD NAME :- MAHADEV - TOLOI - PFUTSERO

MUCK DUMPING PLAN

>>> LEGENDS >>>

PROPOSED CL	
PRO. CHAINAGE	0+000
MUCK DUMPING LOCATION	



S.No	Start Chainage From (Km)	End Chainage To (Km)	Length (m)	Width (m)	Depth (m)	Quantity (Cum.)	Side (Hill / Valley)	Type of Land	Latitude (N)		Longitude (E)	
									For Start Chainage		For End Chainage	
3	12+920	13+020	100	140	21	290426	Valley	Forest Land	25° 8'35.47"	94° 22'56.04"	25° 8'36.53"	94° 22'57.43"

ROAD NAME :- MAHADEV - TOLOI - PFUTSERO

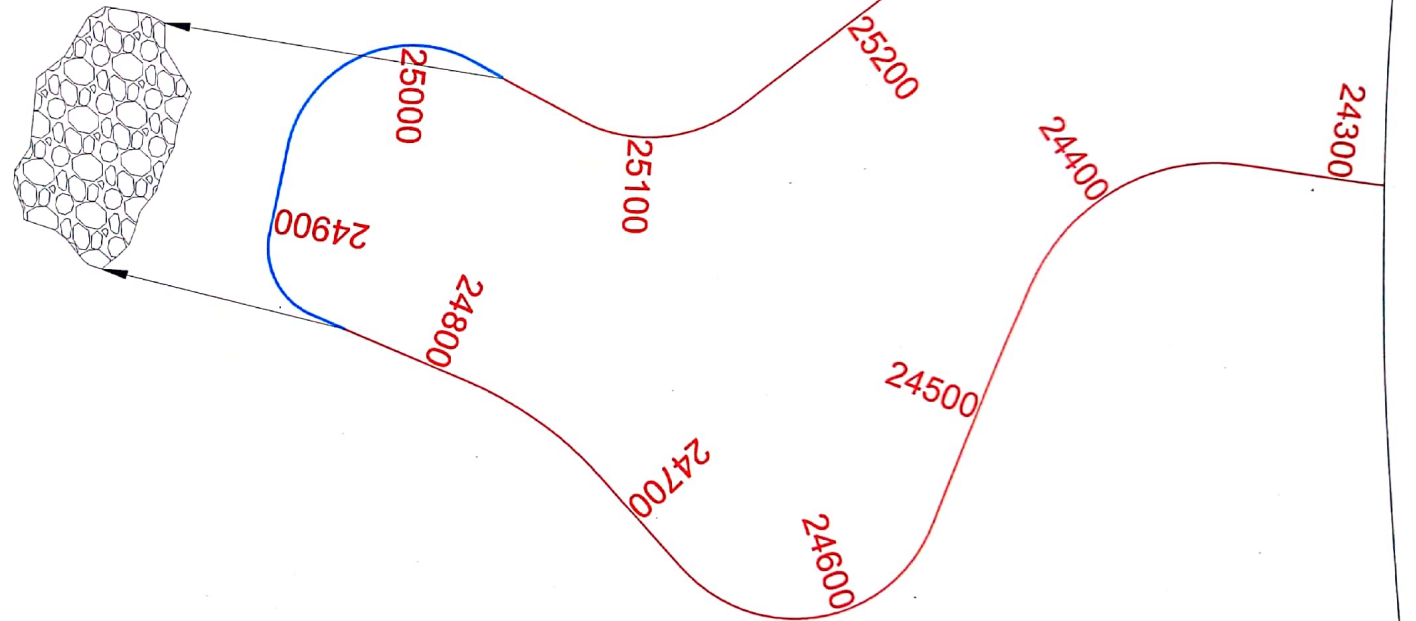
MUCK DUMPING PLAN

>>> LEGENDS >>>

PROPOSED CL	
PRO. CHAINAGE	0+000
MUCK DUMPING LOCATION	

UKHRUL

CHIZAMI



ROAD NAME :- MAHADEV - TOLOI - PFUTSERO

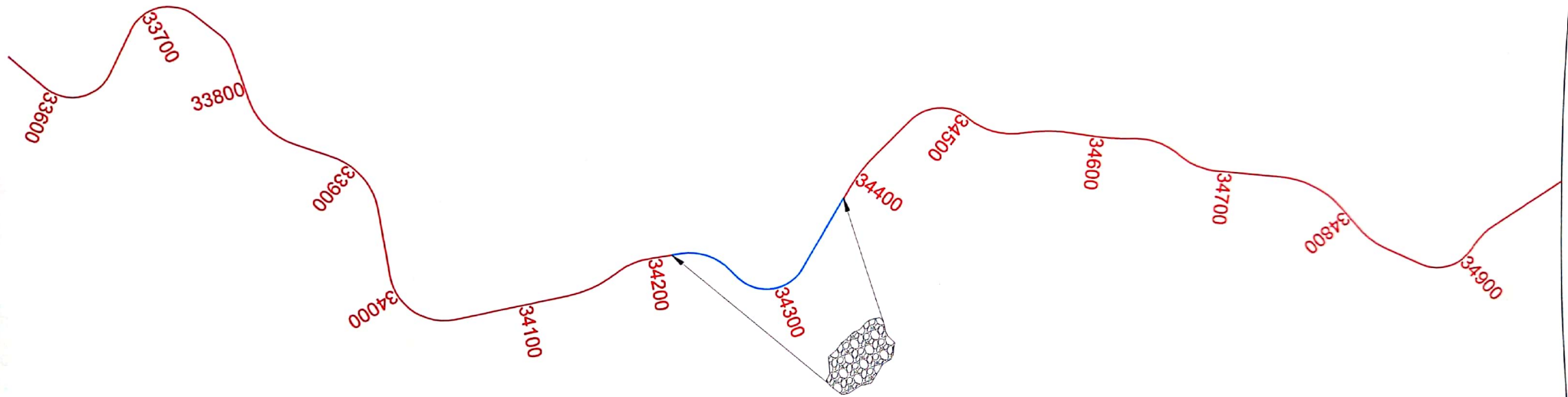
MUCK DUMPING PLAN

>>> LEGENDS >>>

PROPOSED CL	—
PRO. CHAINAGE	0+000
MUCK DUMPING LOCATION	


UKHRUL

CHIZAMI ➤



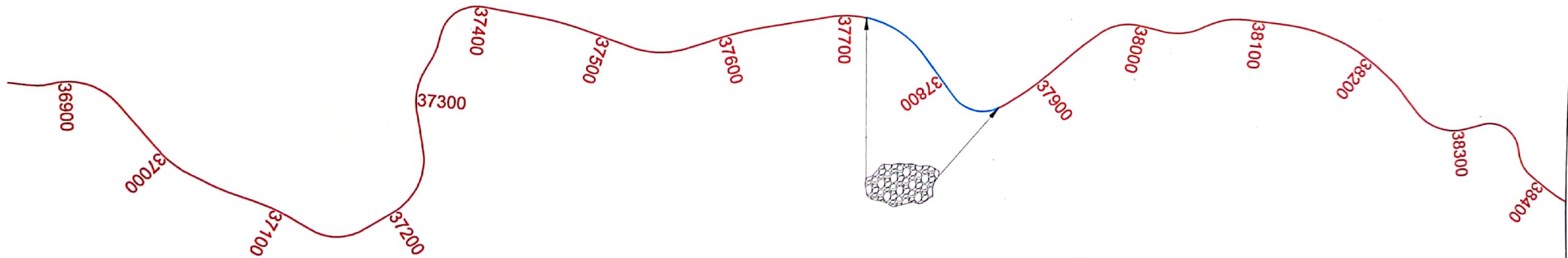
ROAD NAME :- MAHADEV - TOLOI - PFUTSERO

MUCK DUMPING PLAN

>>> LEGENDS >>>	
PROPOSED CL	—————
PRO. CHAINAGE	0+000
MUCK DUMPING LOCATION	

UKHRUL

CHIZAMI



S.No	Start Chainage From (Km)	End Chainage To (Km)	Length (m)	Width (m)	Depth (m)	Quantity (Cum.)	Side (Hill /Valley)	Type of Land	Latitude (N)	Longitude (E)	Latitude (N)	Longitude (E)
									For Start Chainage		For End Chainage	
6	37+710	37+860	150	100	9	129508	Valley	Forest Land	25°12'14.82"	94°21'52.49"	25°12'18.52"	94°21'55.61"

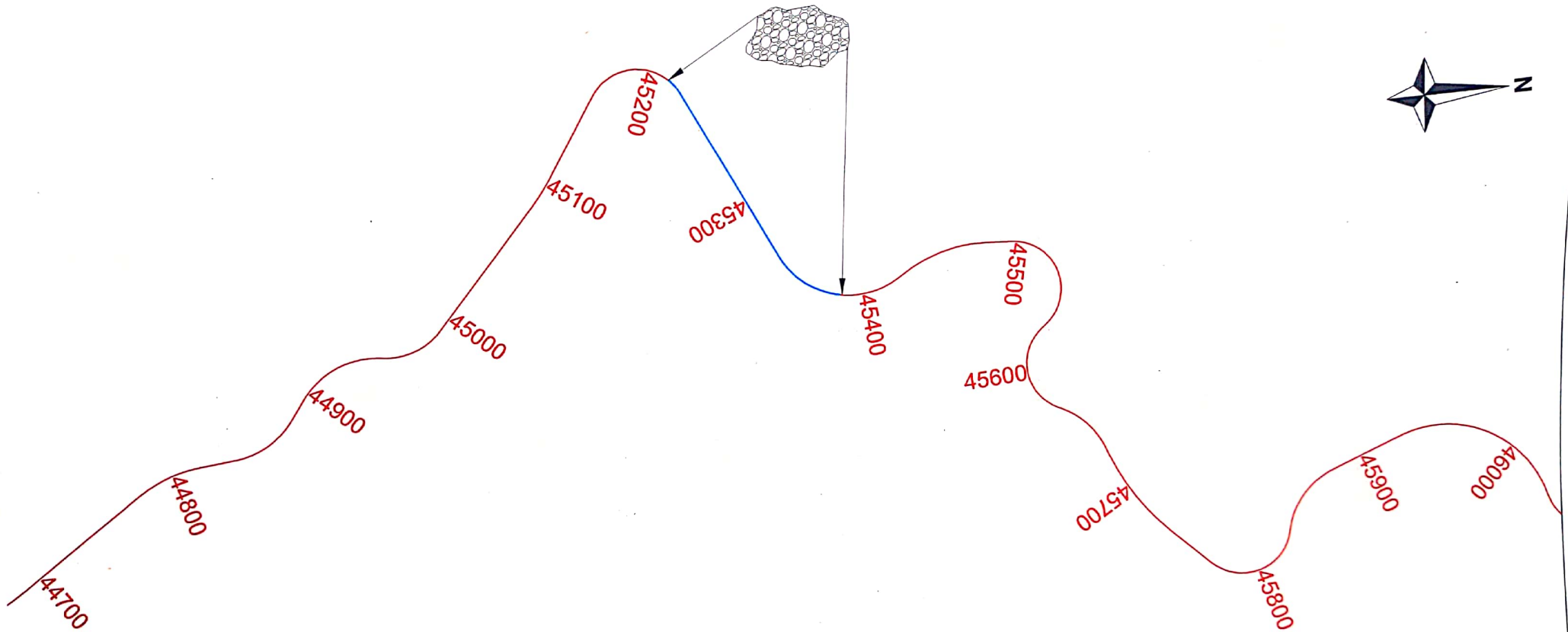
ROAD NAME :- MAHADEV - TOLOI - PFUTSERO

MUCK DUMPING PLAN

>>> LEGENDS >>>	
PROPOSED CL	
PRO. CHAINAGE	0+000
MUCK DUMPING LOCATION	

UKHRUL

CHIZAMI



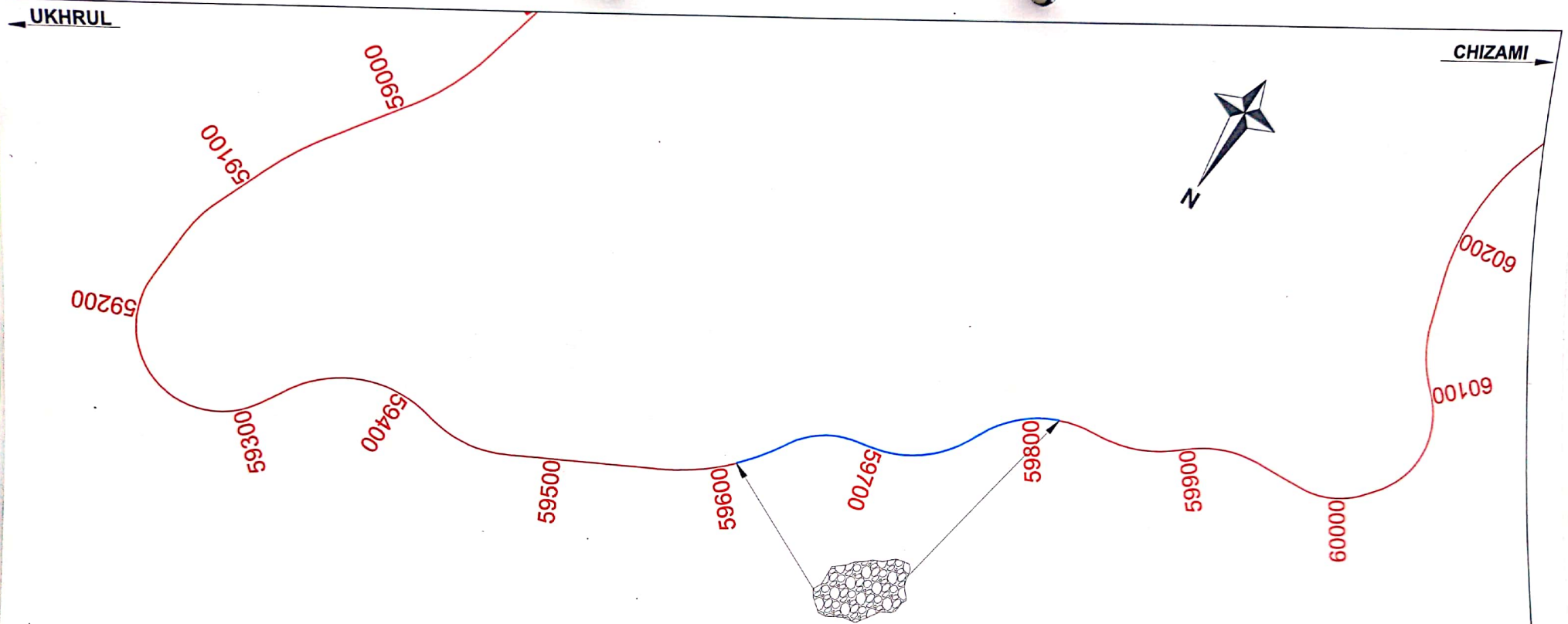
S.No	Start Chainage From (Km)	End Chainage To (Km)	Length (m)	Width (m)	Depth (m)	Quantity (Cum.)	Side (Hill /Valley)	Type of Land	Latitude (N)	Longitude (E)	Latitude (N)	Longitude (E)
									For Start Chainage		For End Chainage	
7	45+210	45+385	175	75	13	174869	Valley	Forest Land	25°14'30.96"	94°23'40.03"	25°14'33.99"	94°23'45.13"

ROAD NAME :- MAHADEV - TOLOI - PFUTSERO

MUCK DUMPING PLAN

>>> LEGENDS >>>

PROPOSED CL	
PRO. CHAINAGE	0+000
MUCK DUMPING LOCATION	



S.No	Start Chainage From (Km)	End Chainage To (Km)	Length (m)	Width (m)	Depth (m)	Quantity (Cum.)	Side (Hill /Valley)	Type of Land	Latitude (N)	Longitude (E)	Latitude (N)	Longitude (E)
									For Start Chainage	For End Chainage	For Start Chainage	For End Chainage
8	59+610	59+810	200	70	27	372397	Valley	Forest Land	25°20'11.64"	94°24'32.52"	25°20'7.68"	94°24'26.91"

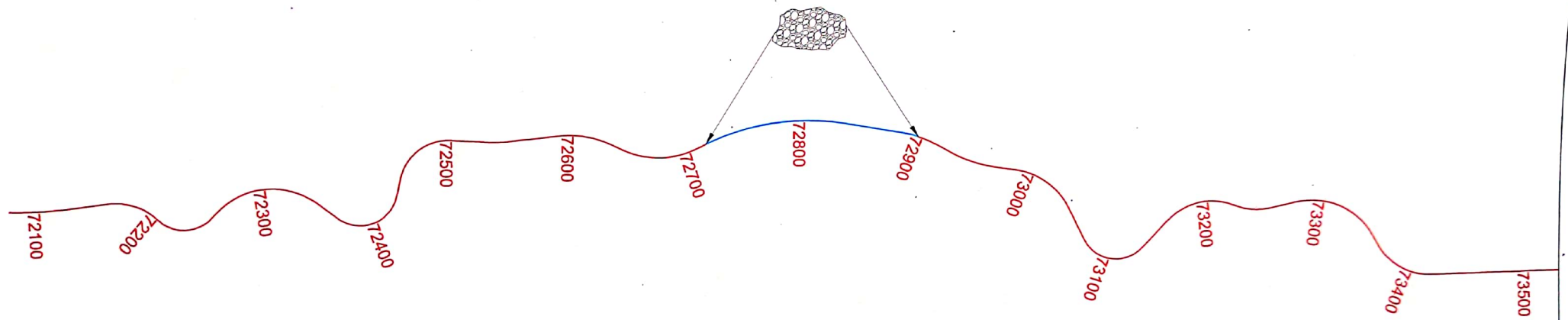
ROAD NAME :- MAHADEV - TOLOI - PFUTSERO

MUCK DUMPING PLAN

>>> LEGENDS >>>	
PROPOSED CL	
PRO. CHAINAGE	0+000
MUCK DUMPING LOCATION	

UKHRUL

CHIZAMI



S.No	Start Chainage From (Km)	End Chainage To (Km)	Length (m)	Width (m)	Depth (m)	Quantity (Cum.)	Side (Hill /Valley)	Type of Land	Latitude (N)	Longitude (E)	Latitude (N)	Longitude (E)
									For Start Chainage		For End Chainage	
9	72+710	72+900	190	70	33	433772	Valley	Forest Land	25°22'49.28"	94°22'43.05"	25°22'55.11"	94°22'42.35"

ROAD NAME :- MAHADEV - TOLOI - PFUTSERO

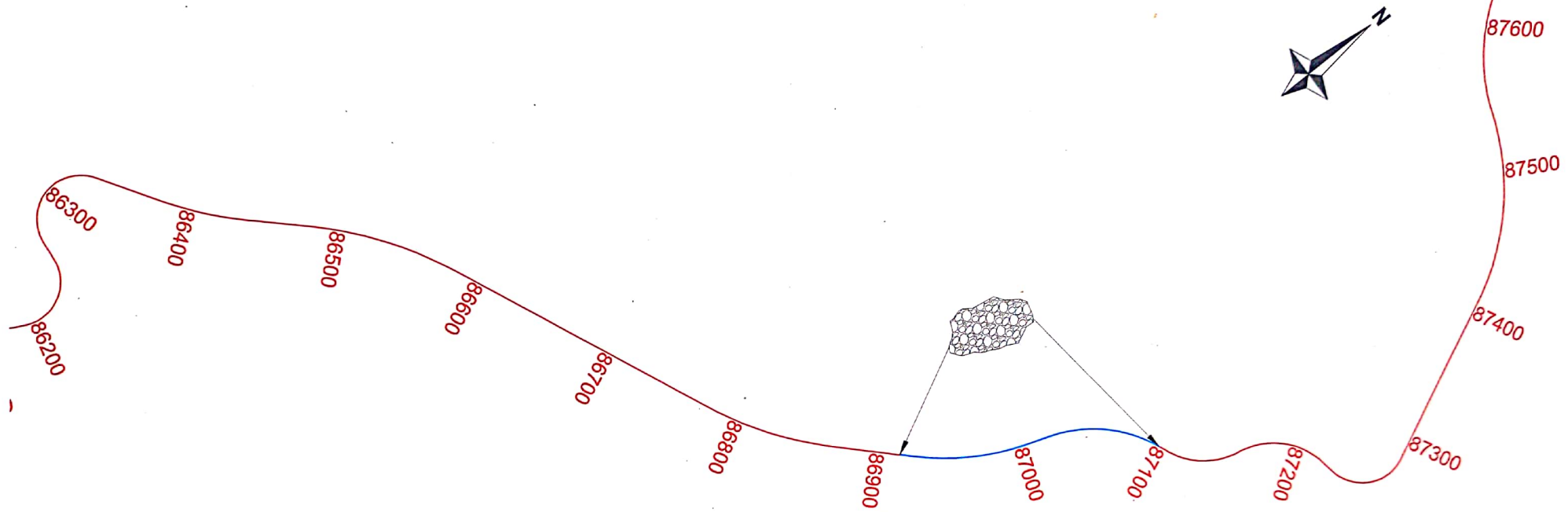
MUCK DUMPING PLAN

>>> LEGENDS >>>

PROPOSED CL	—
PRO. CHAINAGE	0+000
MUCK DUMPING LOCATION	

UKHRUL

CHIZAMI



S.No	Start Chainage From (Km)	End Chainage To (Km)	Length (m)	Width (m)	Depth (m)	Quantity (Cum.)	Side (Hill /Valley)	Type of Land	Latitude (N)	Longitude (E)	Latitude (N)	Longitude (E)
									For Start Chainage		For End Chainage	
10	86+910	87+100	190	70	26	348574	Valley	Forest Land	25°27'48.07"	94°25'21.02"	25°27'52.84"	94°25'25.39"

ROAD NAME :- MAHADEV - TOLOI - PFUTSERO

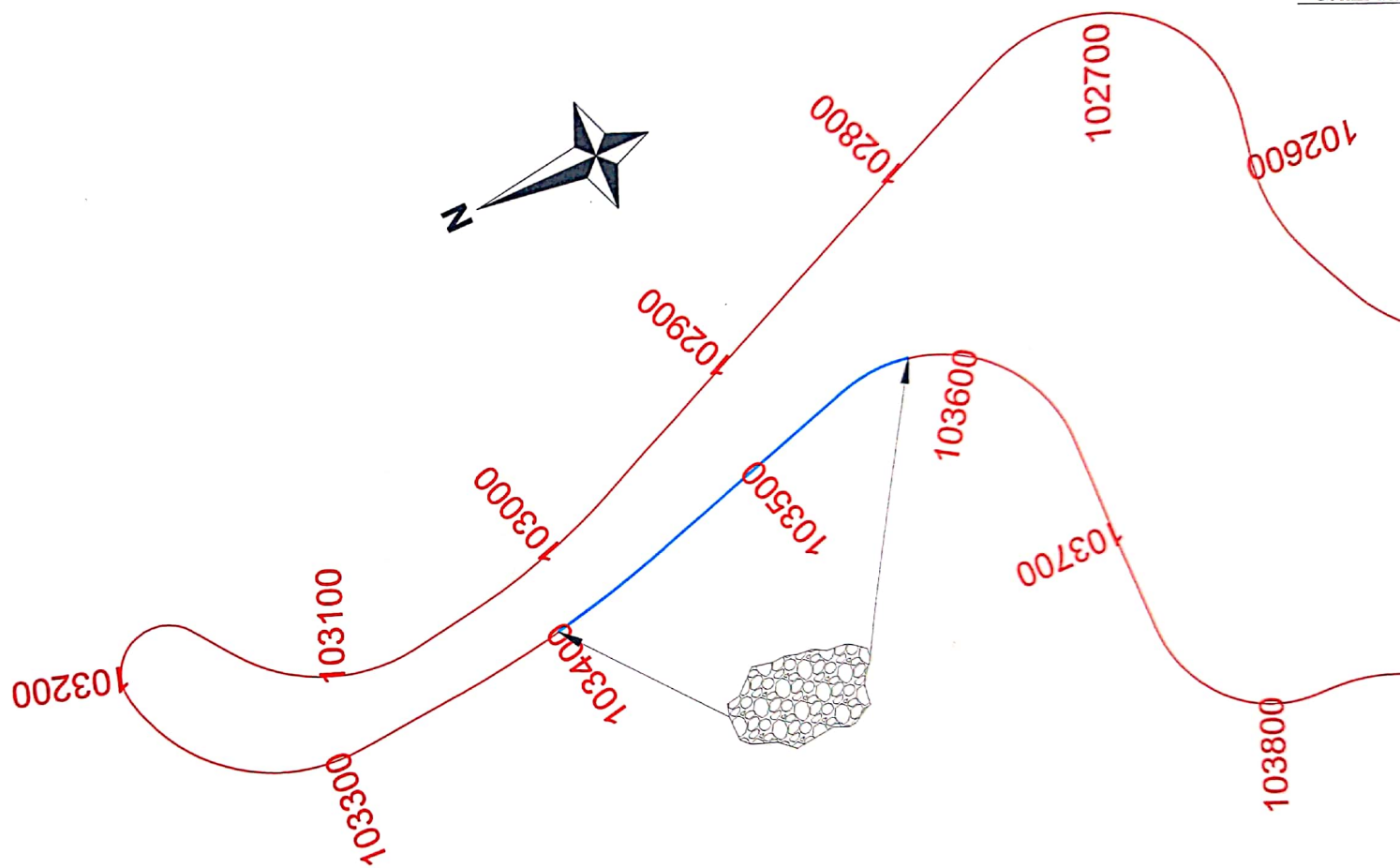
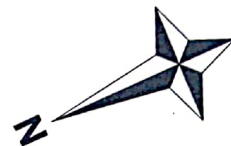
MUCK DUMPING PLAN

>>> LEGENDS >>>

PROPOSED CL	
PRO. CHAINAGE	0+000
MUCK DUMPING LOCATION	

UKHRUL

CHIZAMI



ROAD NAME :- MAHADEV - TOLOI - PFUTSERO

MUCK DUMPING PLAN

>>> LEGENDS >>>

PROPOSED CL	—
PRO. CHAINAGE	0+000
MUCK DUMPING LOCATION	