

D.G.P.S. SURVEY REPORT

**Construction of 132KV Substation
At Kondatarai (Putkapuri) Raigarh,
District Raigarh, Chhattisgarh**



Name of the applicant

E.E (Civil), CSPTCL Raigarh

District: - Raigarh

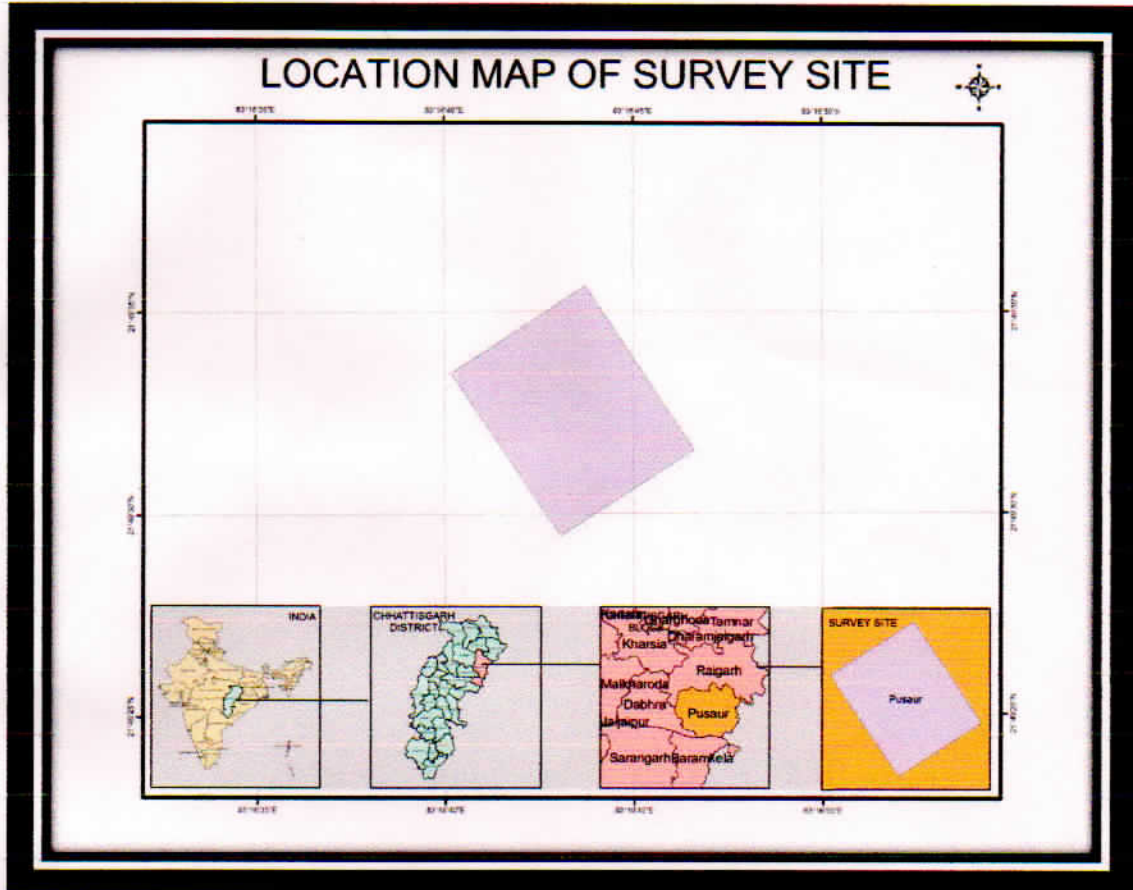
Chhattisgarh

INDEX

S. No.	PARTICULAR	PAGE No.
1	INTRODUCTION	01
2	SURVEY SITE	02
3	GOOGLE SUPERIMPOSE	03
4	SURVEY POINTS	04
5	SURVEY SITE ON SATELLITE IMAGE	05
6	SURVEY POINTS ON SATELLITE IMAGE	06
7	SURVEY SITE ON TOPOSHEET	07
8	SURVEY POINTS ON TOPOSHEET	08
9	SURVEY DATE	09-11

1. INTRODUCTION

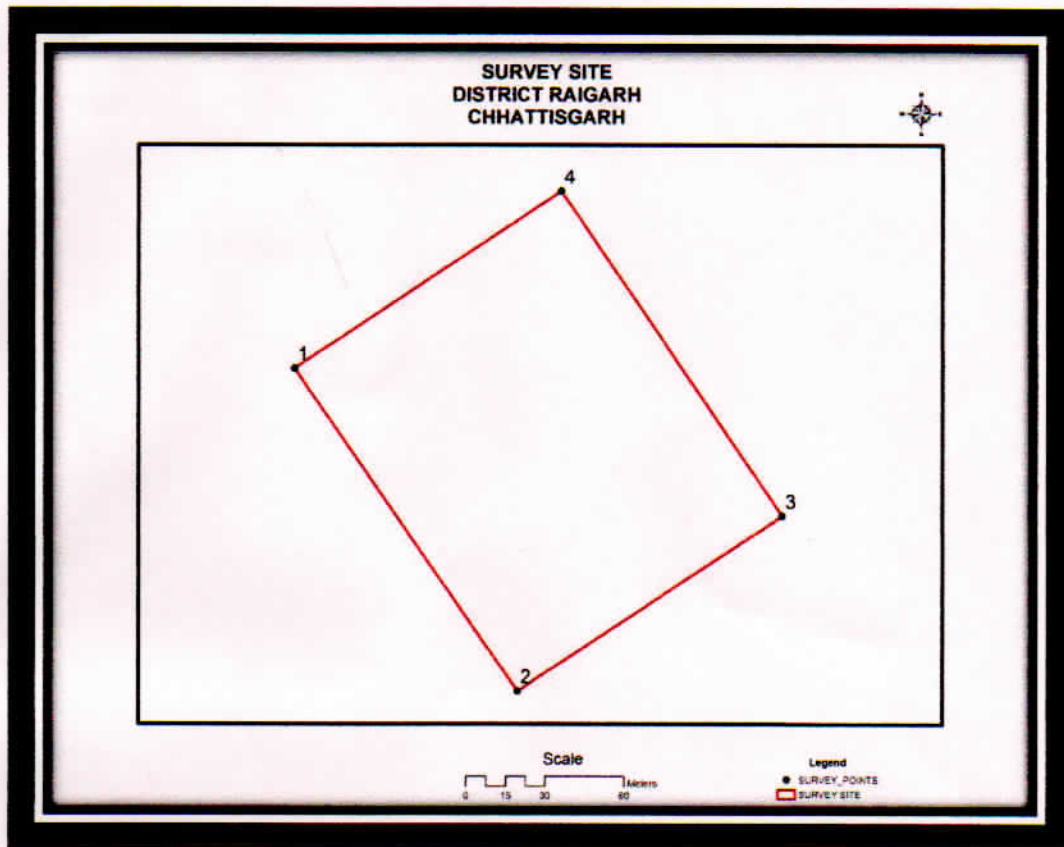
The study area is located near the **Putkapuri village in Block Pusor, District Raigarh, Chhattisgarh**. Raigarh longitude latitude is **83°23'26.55"E 21°53'28.18"N** and the survey site is located in the **83°16'44.26"E 21°49'33.39"N**. Survey site is located 18.5 Kms from **Raigarh**.



Alimony

Executive Engineer (Civil-Transp)
Division, C.S.P.T.C.L. Raigarh

2. SURVEY SITE



S.No	KHASARA No.	SURVEY AREA(in Hac)
1	133/1	2

SNO	LONG_DMS	LAT_DMS	LONG_DD	LAT_DD	LONG_MTS	LAT_MTS
1	83°16'40.182"E	21°49'33.489"N	83.277828	21.825969	735450.342691712	2415305.07874295
2	83°16'43.065"E	21°49'29.463"N	83.278629	21.824851	735534.985748391	2415182.45107941
3	83°16'46.602"E	21°49'31.583"N	83.279612	21.825440	735635.617631424	2415249.17229471
4	83°16'43.741"E	21°49'35.629"N	83.278817	21.826564	735551.596853696	2415372.42408453

SURVEY POINTS IN TABLE

Atkary
Executive Engineer (Civil-Trans)
Division, C.S.P.T.C.L. Raigarh

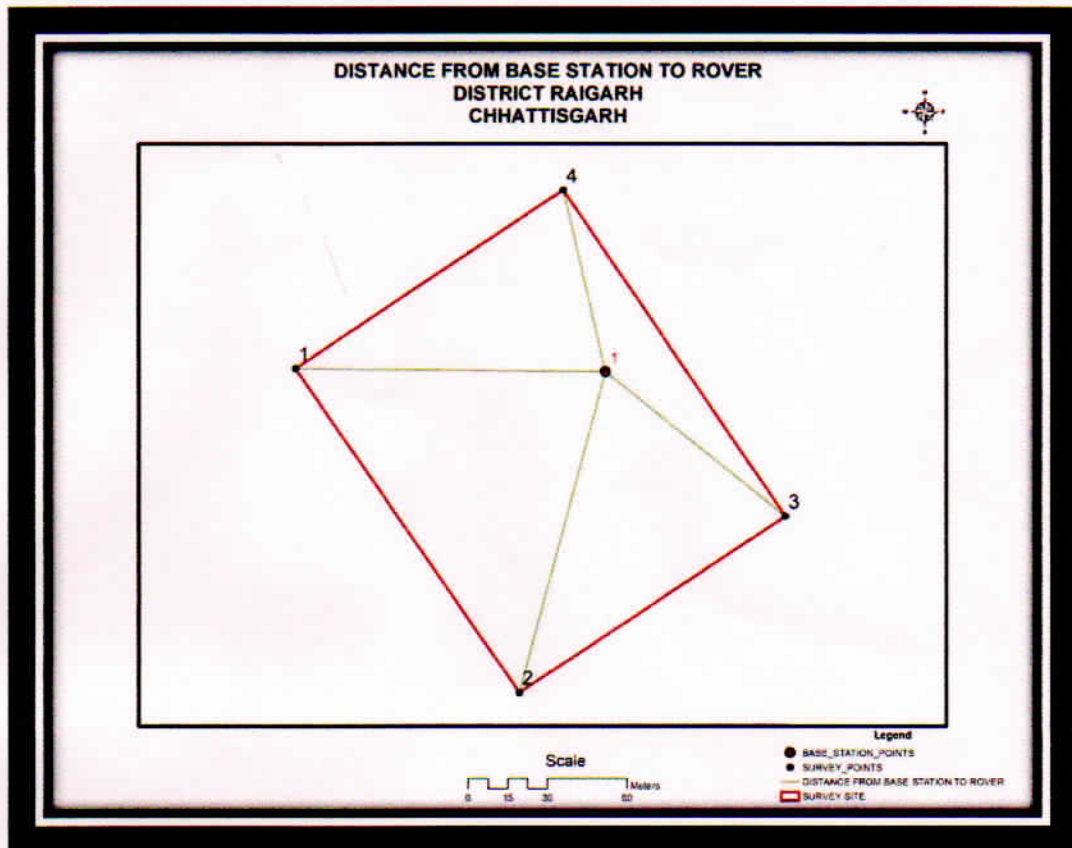
3. GOOGLE SUPERIMPOSE



Aletany

Executive Engineer (Civil-Transp
Division, C.S.P.T.C.L. Raigarh

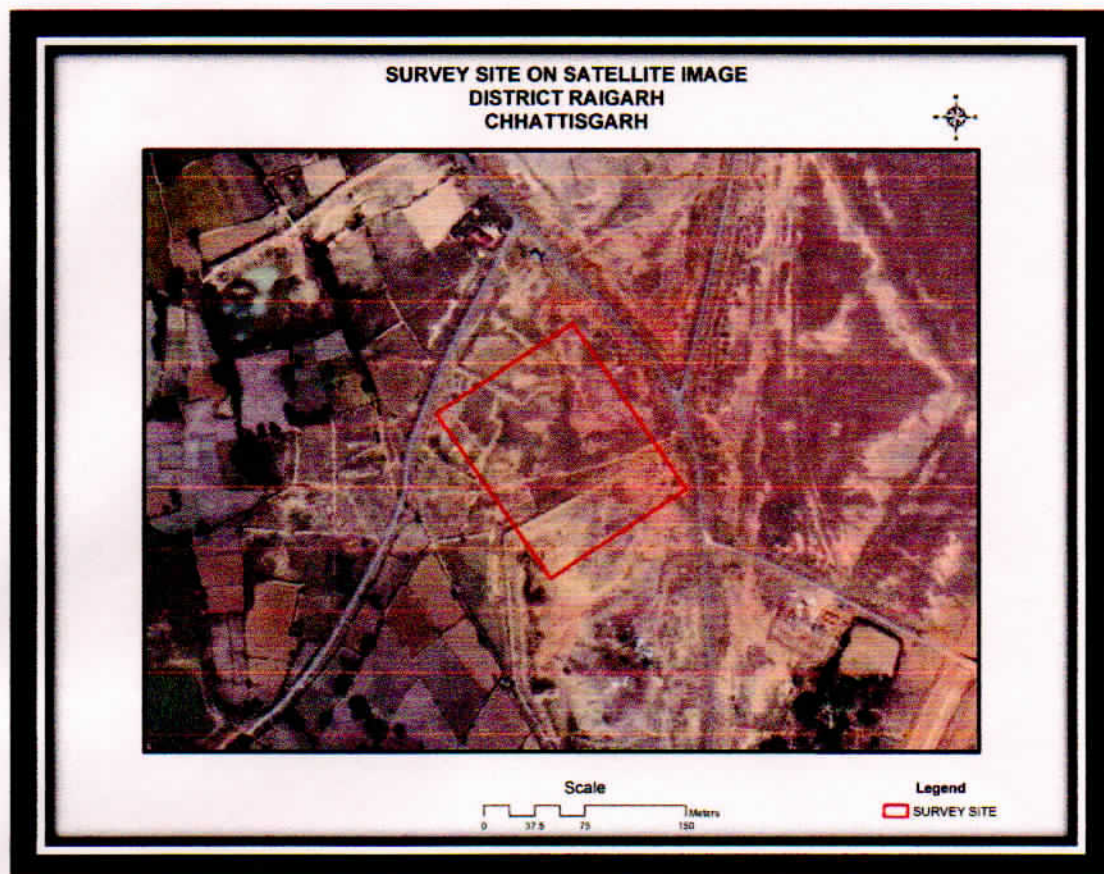
4. SURVEY POINTS



Ahram

Executive Engineer (Civil Engineering)
Division, C.S.P.T.C.L. Raigarh

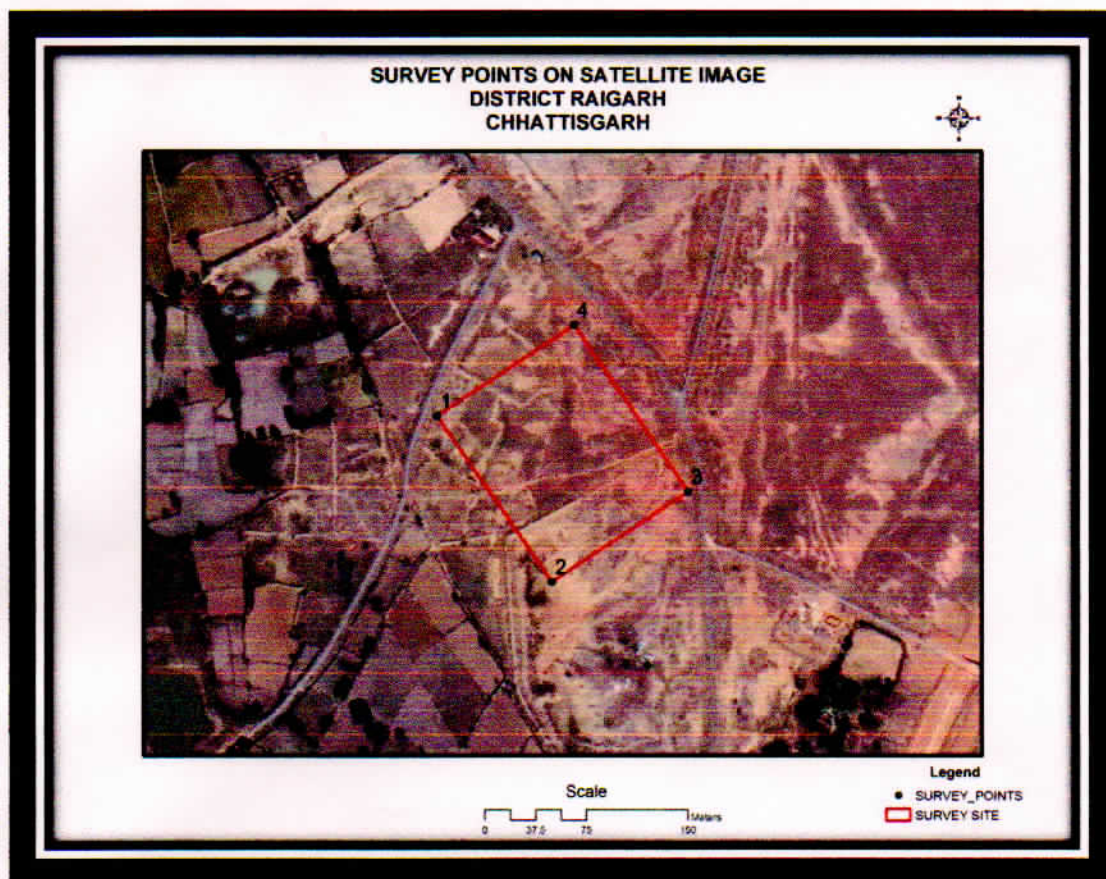
5. SURVEY SITE ON SATELLITE IMAGE



Ahtam

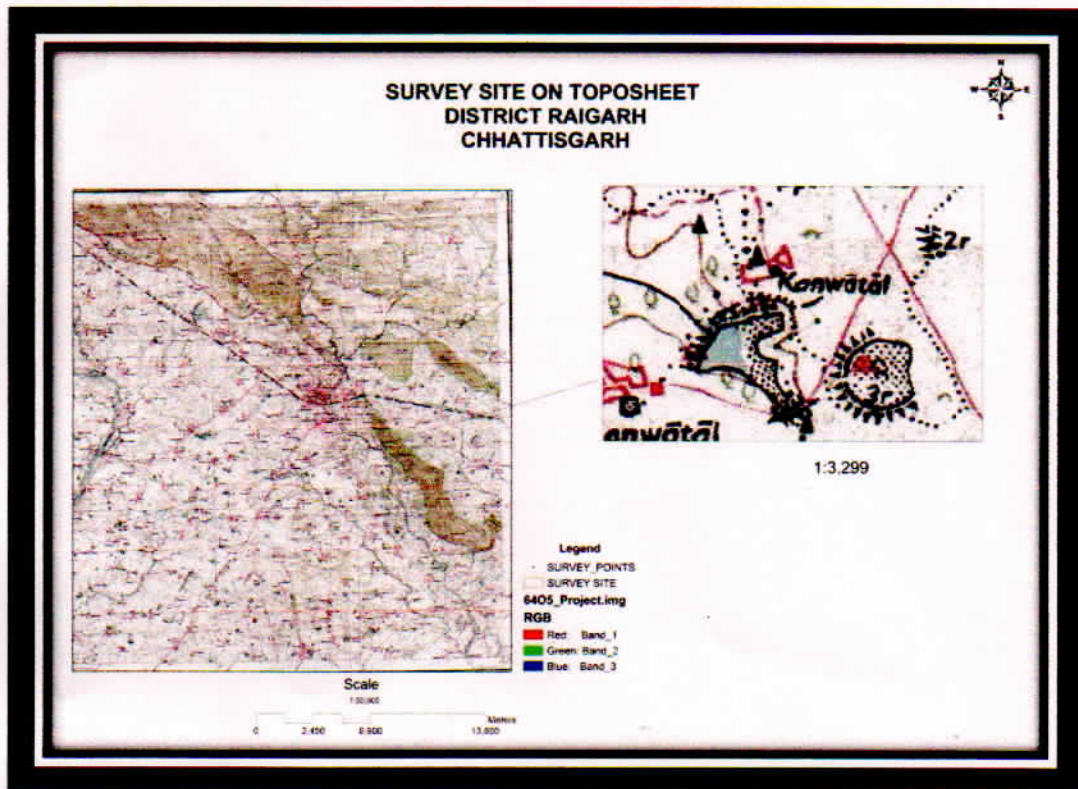
Executive Engineer (Civil-Transport)
Division, C.S.P.T.C.L. Raigarh

6. SURVEY POINTS ON SATELLITE IMAGE



Antony
Executive Engineer (Civil-Team)
Division, C.S.P.T.C.L. Raigarh

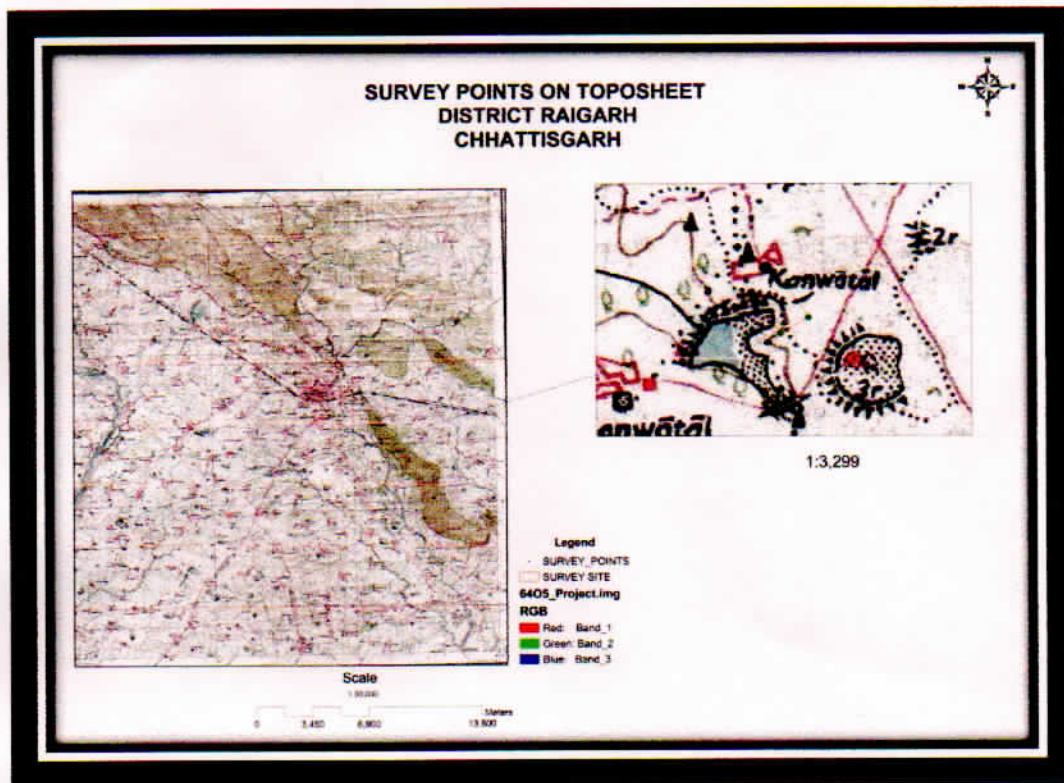
7. SURVEY SITE ON TOPOSHEET



Ahtam

Executive Engineer (Civil-Transport)
Division, C.S.P.T.C.L. Raigarh

8. SURVEY POINTS ON TOPOSHEET



Anthony

Executive Engineer (Civil-Transp)
Division, C.S.P.T.C.L. Raigarh

9. SURVEY DATE

The survey has been conducted on the date 18th Dec 2014. Weather was nice with clear sun light at around 12PM. Survey marking has been done before itself so it was easy to get the location point.



Executive Engineer (Civil-Transportation)
Division, C.S.P.T.C.L. Raigarh



Alham
Executive Engineer (Civil Trans)
Division, C.S.P.T.C.L. Raigarh



Ahramy
 Executive Engineer (Civil-Trans)
 Division, C.S.P.T.C.L. Raigarh