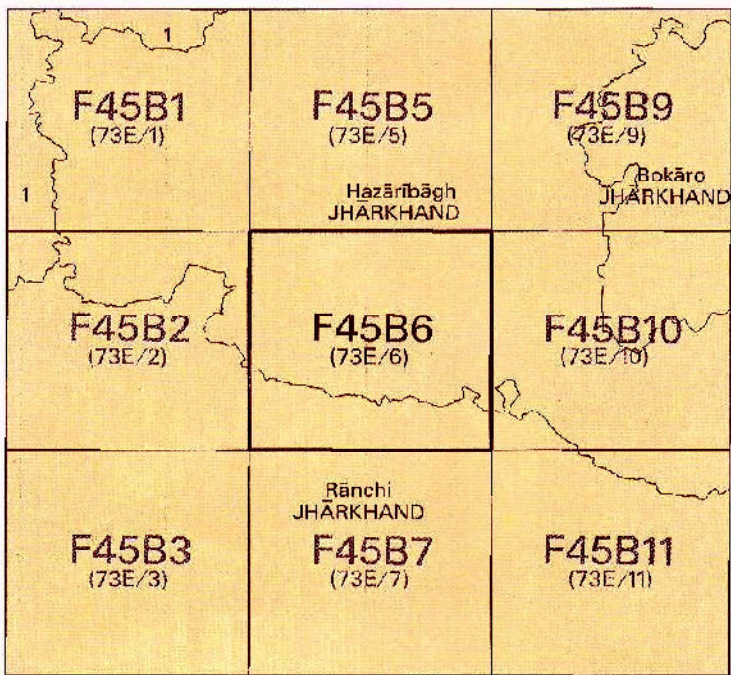


No. F45B6

Scale 1:50,000



1 Chitra, JHARKHAND.

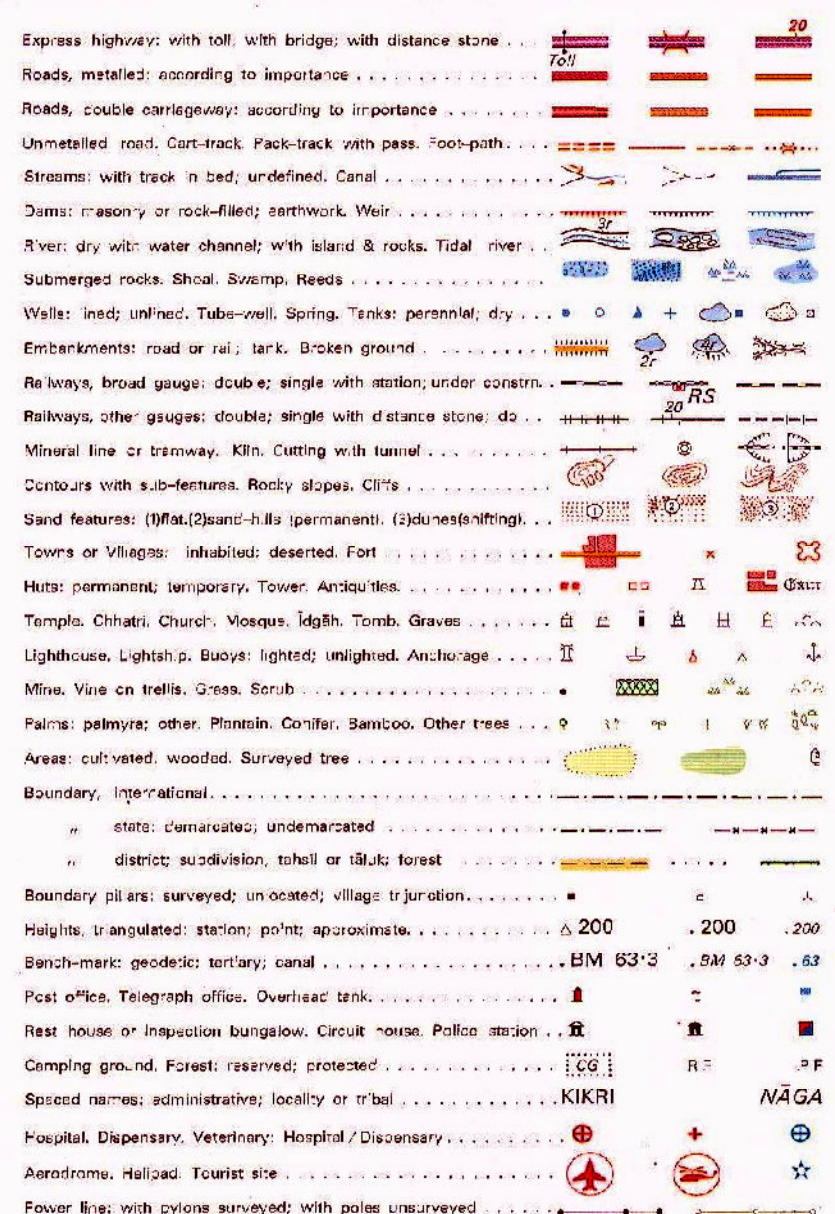
भारतीय सर्वेक्षण विभाग

SURVEY OF INDIA

1st Edition 2011.

Price: Rs.113/-

CONVENTIONAL SYMBOLS



REFERENCES

City: Chittorgarh, PWD: Public Works Department, NH 33: National Highway No. 33.

NOTES :-

Heights are in metres and above Indian mean sea level. Contours are approximate. A 'slope' 'height' 'dy' represents the approximate height, in metres, between the top and bottom of a steep slope. The exterior boundaries of areas of Reserved or Protected Forest are shown by green lines. The kilometre scale numbers along roads and railways are shown in slant type, e.g., 5. The district boundary between Hazratnagar and Ranchi District has been surveyed as pointed out by the local officials on the ground, but has not been verified by the District authorities of Ranchi District. Common boundaries between forests have not been shown for want of information.

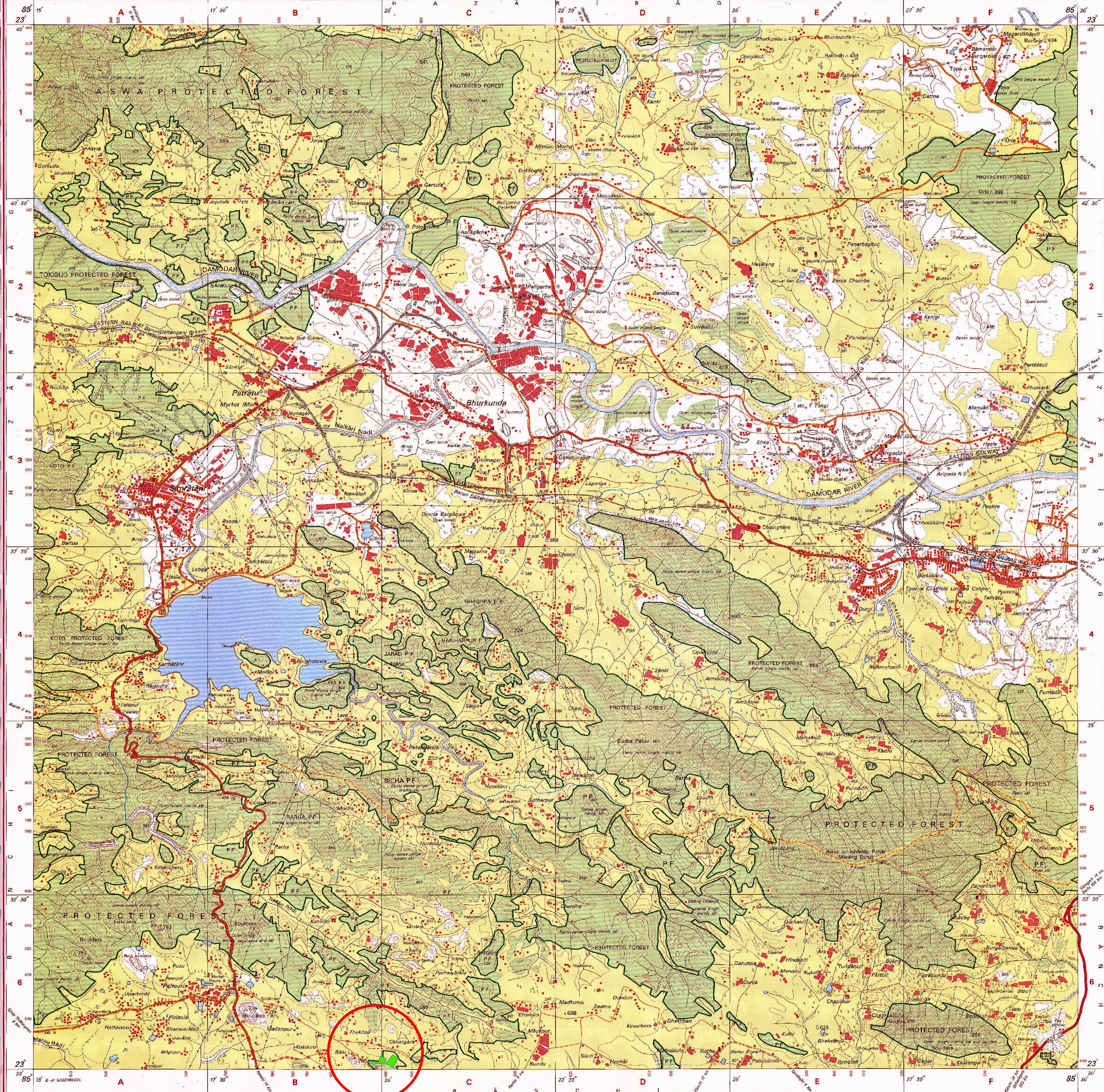
COMPILATION INDEX

A. Surveyed during 1973-79. Updated for major details from satellite imagery of 2001 during 2008-09.

Projection - UTM Datum - WGS 84
Magnetic Variation from True North about 2° West in 2006.
(Divergence by about 1° annually.)
1:50,000
500 m to 1 cm
2 cm to 1 km
CONTOUR INTERVAL 20 METRES

For further details about this map, please contact
Director
Jharkhand Geo-Spatial Data Centre
Survey of India, Dordani
Ranchi - 834002.
Fax : 0651-2482789

WEBSITE - www.surveyofindia.gov.in



Proposal No. : FP/JH/ROAD/146250/2021

CA Area for Ranchi Division

SCALE 1:50,000

CA Area Details

Sl No	Project Name	Mouza Name	Plot No	CA Area in Ha.
1	CA area For Bharatmala Project (Ranchi Div.)	Balu (29)	25	9.5465

Legend

CAArea_Balu_

Sudhir Kumar

Project Director
NHAI, PIU
Dhanbad