



निर्वात के लिए नहीं NOT FOR EXPORT

OPEN SERIES MAP

No. E4409

Scale 1:50,000

Warangal ANDHRA PRADESH E4418 (65B/8)	E4412 (65B/12)	E44116 (65B/16)
E4405 (65C/5)	E4409 (65C/9)	E44013 (65C/13)
E4406 (65C/6)	E44010 (65C/10)	E44014 (65C/14)

1 Bastar, CHATTISGARH

भारतीय सर्वेक्षण विभाग SURVEY OF INDIA

1st Edition 2011.

Price : Rs. 77/-

CONVENTIONAL SYMBOLS

- Express highway with toll, with bridge, with distance stone
- Roads, metalled: according to importance
- Roads, double carriageway: according to importance
- Unmetalled road: Cart track, Pack track with pass, Foot path
- Stream: with track in bed; undefined Canal
- Dam: masonry or rock-filled, earthwork, Weir
- River: dry with water channel, with island & rocks, Tidal river
- Submerged rocks, Shoal, Swamp, Reeds
- Wells: lined, unlined, Tube-well, Spring, Tank, perennial, dry
- Embankment: road or rail, tank, Broken ground
- Railways, broad gauge: double, single with station, under construction
- Railways, other gauge: double, single with distance stone, etc.
- Mineral line or tramway: Rtn, Cutting with tunnel
- Contours with sub-factors: Rocky slopes, Cliff
- Sand features: (1) flat (2) dunes (3) dunes (4) dunes (5) dunes
- Towns or villages: inhabited, deserted, Fort
- Hills: permanent, temporary, Tower, Antidote
- Temples, Chhatra, Church, Mosque, Ugha, Tomb, Graves
- Lighthouse, Lightship, Buoy: lighted, unlighted, Anchorages
- Mine: View on hills, Grass, Scrub
- Palms: palms; other: Plantain, Conifer, Bamboo, Other trees
- Areas: cultivated, wooded, Surveyed tree
- Boundary, international
- state: demarcated, undemarcated
- district, subdivision, taluk or taluk, forest
- Boundary pillars: surveyed, unlocated
- Height, triangulated: station; point; approximate
- Bench-mark: geodetic, tertiary, canal
- Post office, Telegraph office, Overhead tank
- Rest house or inspection bungalow, Circuit house, Police station
- Camping ground, Forest: reserved, protected
- Spaced names: administrative, locality or tribal
- Hospital, Dispensary, Veterinary Hospital / Dispensary
- Aerodrome, Helipad, Tourist site
- Power line: with pylons surveyed, with poles unsurveyed

NOTES :-

- Contours are approximate
- Height in metres and above Indian mean sea level
- A relative height, e.g., 50', represents the approximate height, in metres, between the top and bottom of a steep slope
- Unmetalled roads are usually motorable and cart tracks separate in dry season
- Tanks, shown dry, in this area usually contain water from July to December
- The major administrative partitions of districts in Andhra Pradesh State are called 'Mandals' and their boundaries are shown by black boundary symbols
- A relative height, e.g., 50', against a well, indicates its total depth in metres

COMPILATION INDEX

- A Compiled from 1:25,000 surveyed during 1965-66
- Updated for major details during 2005-06

Projection - UTM Datum - WGS 84

Magnetic Variation from True North about 1 1/4° West in 2005.

1:50,000

Metres 1000 500 0 1 2 3 Kilometres

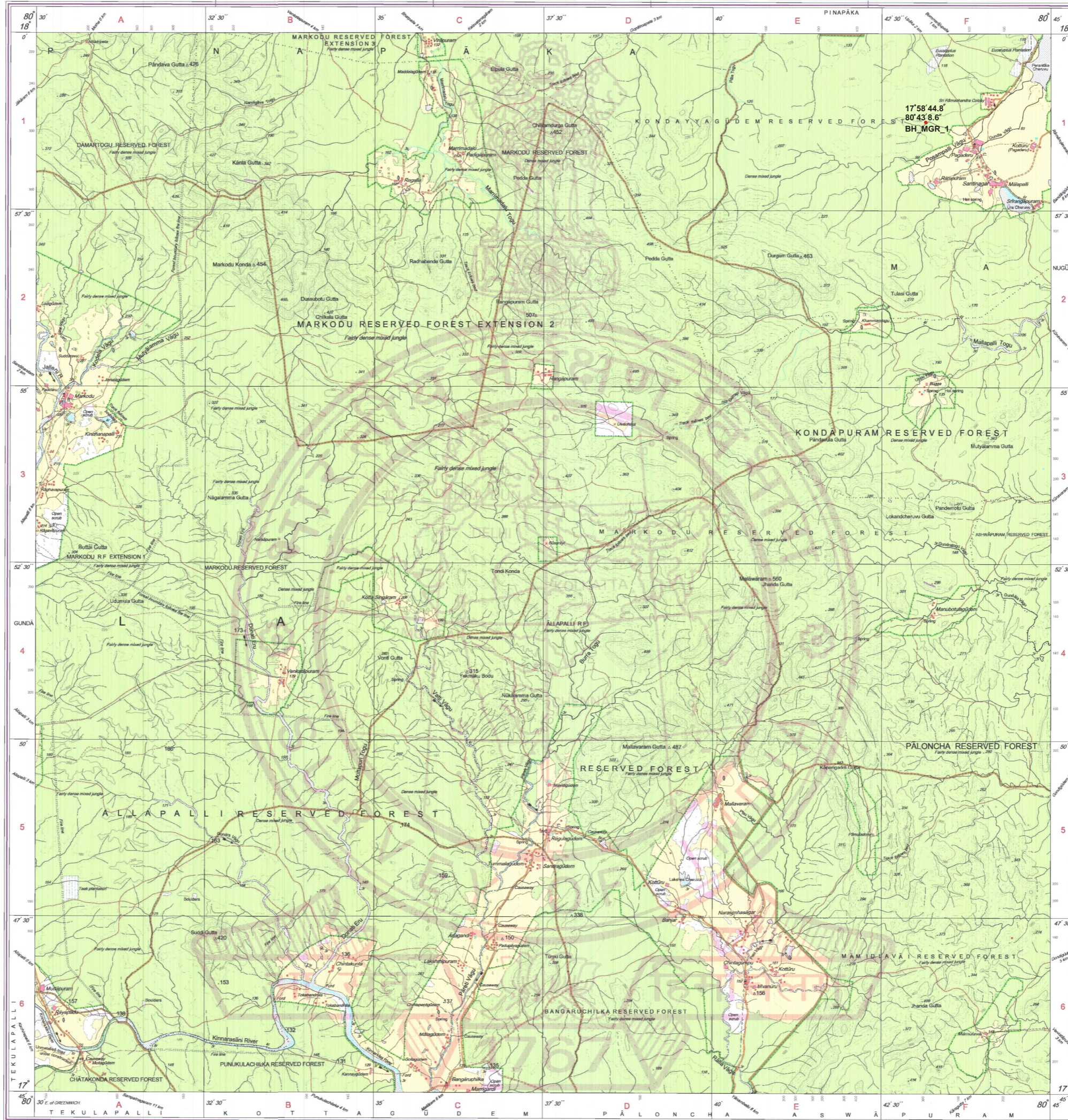
CONTOUR INTERVAL 20 METRES

For further details about this map, please contact Director, Andhra Pradesh Geo-Spatial Data Centre, Survey of India, Uppal Hyderabad.

WEBSITE - www.surveyofindia.gov.in

Reproduction in whole or part by any means is prohibited without the written permission of Survey of India, the National Mapping Agency.

© GOVERNMENT OF INDIA COPYRIGHT, 2011.



REG. No. P.D.F. - 59G 0711 (Andhra Pradesh) GOC-1-50-009

मंत्रालय के अधीन सर्वेक्षण विभाग, भारत, के द्वारा तैयार किया गया है।
Published under the direction of Swarna Subba Rao, B.E., Surveyor General of India,
Survey of India, Hattibarkala Estate, Post Box No.37, Dehra Dun-248001 (Uttarakhand),
Department of Science & Technology, Government of India.

PRINTED AT THE SOUTHERN PRINTING GROUP OF SURVEY OF INDIA.