



निर्गत के लिए नहीं NOT FOR EXPORT

OPEN SERIES MAP

No. D44A14

Scale 1:50,000

D44A9 (5719)	D44A13 (57113)	D44B1 (57M1)
Kurnool ANDHRA PRADESH D44A10 (57110)	Prakāsam ANDHRA PRADESH D44A14 (57114)	D44B2 (57M2)
D44A11 (57111)	D44A15 (57115)	D44B3 (57M3)

भारतीय सर्वेक्षण विभाग SURVEY OF INDIA

1st Edition 2011.

Price:Rs.94/-

CONVENTIONAL SYMBOLS

- Express highway: with toll; with bridge; with distance stone
- Roads, metalled: according to importance
- Roads, double carriageway: according to importance
- Unmetalled road. Cart-track. Pack-track with pass. Foot-path
- Streams: with track in bed; undefined. Canal
- Dams: masonry or rock-filled; earthwork. Weir
- River: dry with water channel; with island & rocks. Tidal river
- Submerged rocks. Shoal. Swamp. Reeds
- Wells: lined; unlined. Tube-well. Spring. Tanks: perennial; dry
- Embankments: road or rail; tank. Broken ground
- Railways, broad gauge: double; single with station; under constr.
- Railways, other gauges: double; single with distance stone; do.
- Mineral line or tramway. Kin. Cutting with tunnel
- Contours line with sub-features. Rocky slopes. Cliffs
- Sand features: (flat) (island-hills) (permanent). (3) (dunes) (shifting)
- Towns or Villages: inhabited; deserted. Fort
- Huts: permanent; temporary. Tower. Antiquities
- Temple. Chhatri. Church. Mosque. Idgah. Tomb. Graves
- Lighthouse. Lightship. Buoy: lighted; unlighted. Anchorage
- Mine. Vine on trellis. Grass. Scrub
- Palms: palmyra; other. Plantain. Conifer. Bamboo. Other trees
- Areas: cultivated; wooded. Surveyed tree
- Boundary, international
- state: demarcated; undemarcated
- district: subdivision; taluk or taluk forest
- Boundary pillars: surveyed; unlocated
- Heights, triangulated: station; point; approximate
- Bench-mark: geodetic; tertiary; canal
- Post office. Telegraph office. Overhead tank
- Rest house or inspection bungalow. Circuit house. Police station
- Camping ground. Forest: reserved; protected
- Spaced names: administrative; locality or tribal
- Hospital. Dispensary. Veterinary. Hospital / Dispensary
- Aerodrome. Helipad. Tourist site
- Power line: with pylons surveyed; with poles unsurveyed

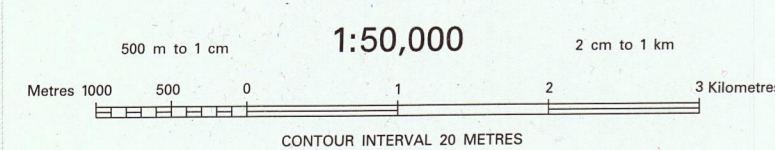
NOTES :-

Contours are approximate.
 Heights are in metres and above Indian mean sea level.
 A relative height, e.g., 50', represents the approximate height, in metres, between the top and bottom of a steep slope.
 Unmetalled roads are usually motorable and cart-tracks passable in dry season.
 The major administrative partitions of districts in Andhra Pradesh State are called 'Mandals' and their boundaries are shown by taluk boundary symbol.

COMPILATION INDEX

A Compiled from 1:25,000 Survey, 1986-87. Updated for major details during 2004-05.

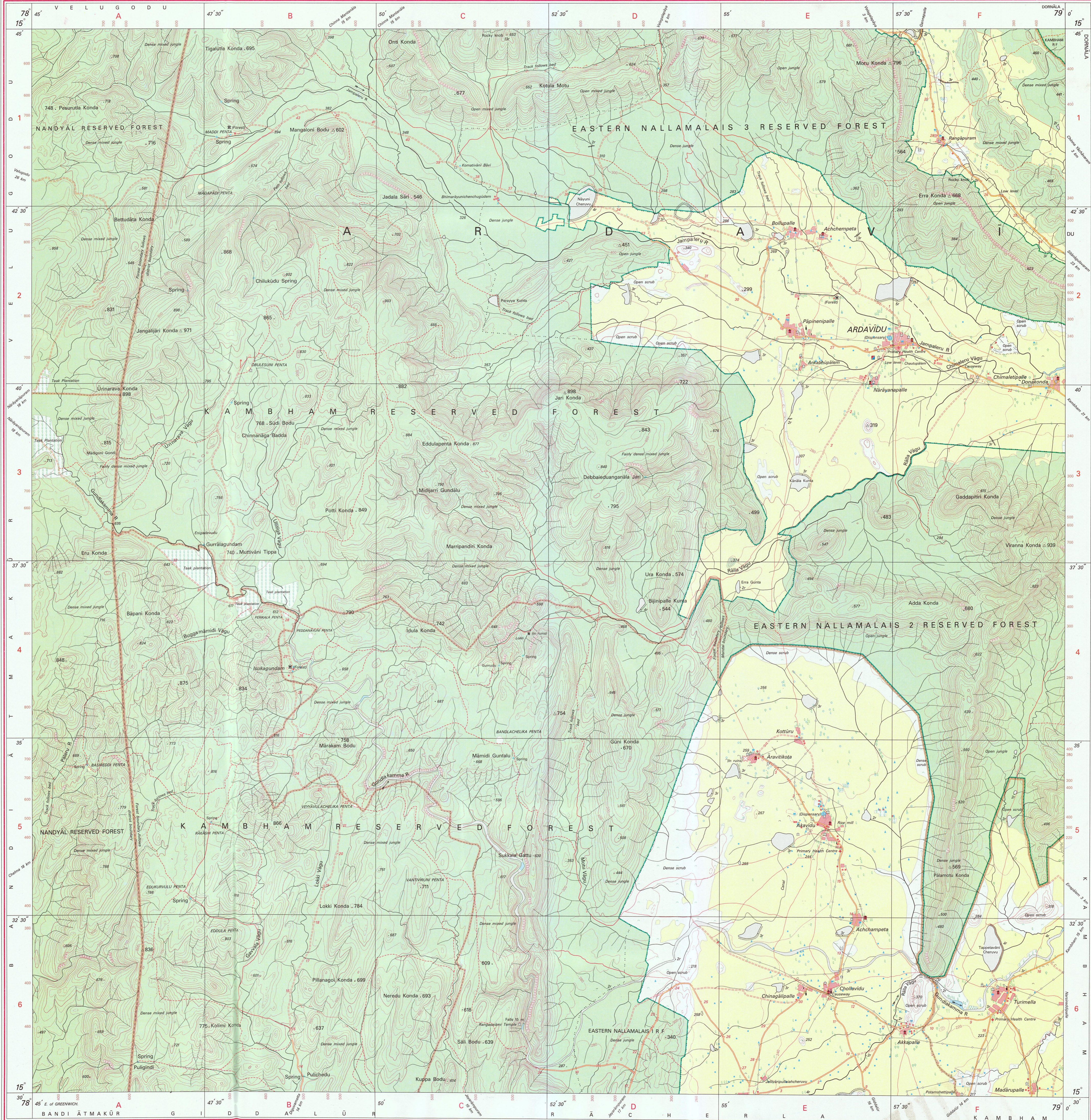
Projection - UTM Datum - WGS 84
 Magnetic Variation from True North about 1 1/2° West in 2005.
 (Annual change negligible).



For further details about this map, please contact
 Director
 Andhra Pradesh Geo-Spatial Data Centre
 Survey of India, Uppal
 Hyderabad.

WEBSITE - www.surveyofindia.gov.in

Reproduction in whole or part by any means is prohibited
 without the written permission of Survey of India, the
 National Mapping Agency.



REG. No. 9908-SPG D-11 (Andhra Pradesh GDC-1:50,000-1508'15)

भारत के सर्वेक्षण विभाग द्वारा तैयार किया गया, एमएससी (फिजिक्स), पीजीडिप्लोमा (कार्टो) (आईटीसी) के निदेश पर प्रकाशित।
 Published under the direction of Rajendra Mani Tripathi, M.Sc. (Physics), P.G. Diploma (Carto) (ITC, The Netherlands) Surveyor General of India,
 Survey of India, Hathi Barkala Estate, Post Box No. 37, Dehra Dun - 248001 (Uttarakhand),
 Department of Science & Technology, Government of India.

PRINTED AT THE SOUTHERN PRINTING GROUP OF SURVEY OF INDIA.