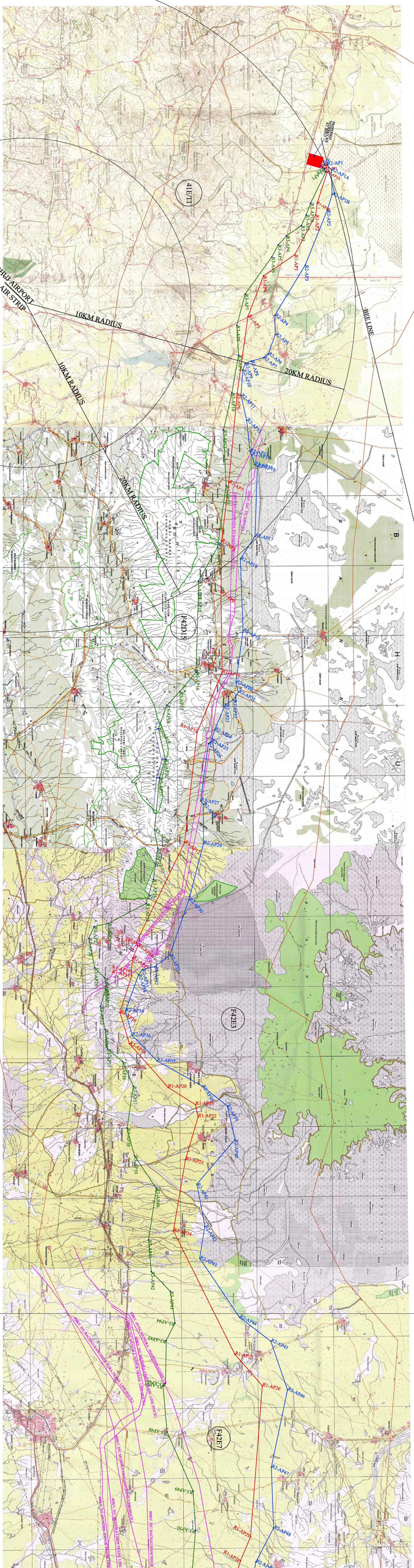


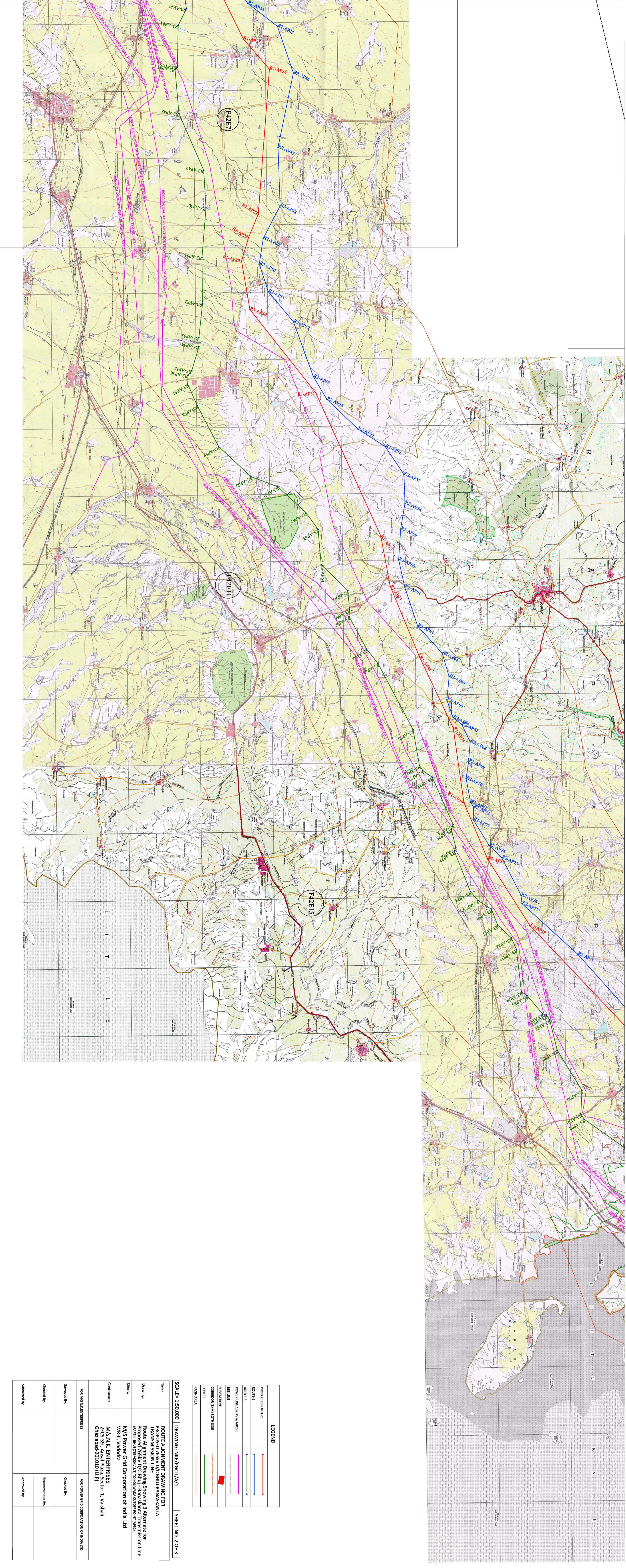
ROUTE ALIGNMENT DRAWING SHOWING 3 ALTERNATIVE ROUTE FOR PROPOSED 765KV D/C BHUJ - BANASKANTHA TRANSMISSION LINE (PART-I BHUJ (765/400KV . S/S) TO SANTALPUR CUT OFF POINT (AP 51)



LEGEND

| | |
|---------------------------|---|
| PROPOSED ROUTE 1 | — |
| ROUTE 2 | — |
| ROUTE 3 | — |
| POWER LINE 132 KV & ABOVE | — |
| BELT LINE | — |
| SUBSTATION | ■ |
| CONTOUR (BAM) BOTH SIDE | — |
| FOREST | — |
| RAIN FEED | — |

| | | |
|--|-----------------------|------------------|
| SCALE= 1:50,000 | DRAWING: IWE/PSCD/AV1 | SHEET NO. 1 OF 3 |
| <p>TITLE: ROUTE ALIGNMENT DRAWING FOR PROPOSED 765KV D/C BHUJ-BANASKANTHA TRANSMISSION LINE</p> <p>Drawing: Route Alignment Drawing Showing 3 Alternate for Proposed 765KV D/C BHUJ - BANASKANTHA TRANSMISSION LINE (PART-I BHUJ (765/400KV . S/S) TO SANTALPUR CUT OFF POINT (AP 51))</p> <p>Client: M/S Power Grid Corporation of India Ltd</p> <p>Contractor: M/S. N. K. ENTERPRISES 2FC-39, Ansal Plaza, Sector-1, Vashi Ghazabad-201010 (UP)</p> <p>FOR M/S N.K. ENTERPRISES</p> <p>FOR POWER GRID CORPORATION OF INDIA LTD</p> | | |
| Surveved By: | Checked By: | Approved By: |
| Checked By: | Recommended By: | |
| Submitted By: | Approved By: | |

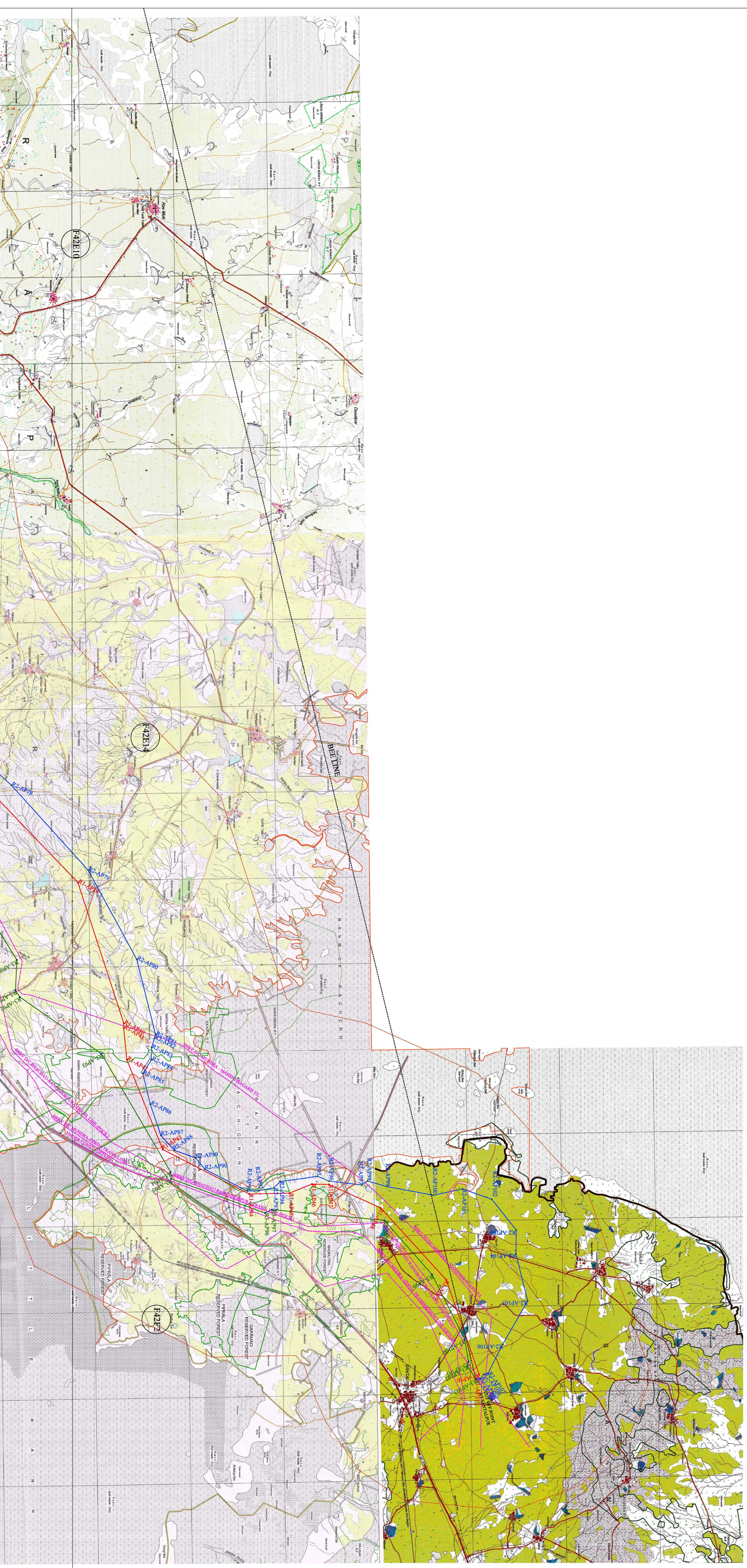


| LEGEND | |
|---------------------------|---|
| PROPOSED ROUTE 1 | — |
| ROUTE 2 | — |
| ROUTE 3 | — |
| POWER LINE 120 KV & ABOVE | — |
| LINE | — |
| SUBSTATION | ■ |
| CORRIDOR (B&M) BOTH SIDE | — |
| FOREST | — |
| RAIN AREA | — |

SCALE: 1:50,000 | DRAWING: NKE/REG/CA/1 | SHEET NO. 2 OF 3

| | |
|---|--|
| Title: | ROUTE ALIGNMENT DRAWING FOR PROPOSED 765KV D/C BHU-BRAMSKANTA TRANSMISSION LINE |
| Drawing: | Route Alignment Drawing Showing 3 Alternate for (Phase II) BHU (765KV/50) TO (INDIA) CENTER (PHASE II) BHU |
| Client: | M/S Power Grid Corporation of India Ltd |
| Contractor: | M/S N. K. ENTERPRISES 27C5-39, Ansal Plaza, Sector-1, Vaishali Ghaziabad-201010 (U.P) |
| FOR POWER GRID CORPORATION OF INDIA LTD | FOR POWER GRID CORPORATION OF INDIA LTD |
| Surveyed By: | Checked By: |
| Checked By: | Recommended By: |
| Submitted By: | Approved By: |

ROUTE ALIGNMENT DRAWING SHOWING 3 ALTERNATIVE ROUTE FOR PROPOSED 765KV D/C BHUJ - BANASKANTA TRANSMISSION LINE (PART-I BHUJ (765/400KV . S/S) TO SANTALPUR CUT OFF POINT (AP 51)



| LEGEND | |
|---------------------------|--|
| PROPOSED ROUTE-1 | |
| ROUTE 2 | |
| ROUTE 3 | |
| POWER LINE 132 KV & ABOVE | |
| NET LINE | |
| SUBSTATION | |
| COMMON (R&D) RIGHT OF WAY | |
| FOREST | |
| WATER AREA | |

SCALE= 1:50,000 | DRAWING: MKE/PGCL/MT | SHEET NO. 3 OF 3

| | |
|--|--|
| TITLE: ROUTE ALIGNMENT DRAWING FOR PROPOSED D/C BHUJ - BANASKANTA TRANSMISSION LINE | |
| DRAWING: Route Alignment Drawing Showing 3 Alternates for Proposed 765KV D/C Bhuj - Banaskanta Transmission Line (PART-I BHUJ (765/400KV . S/S) TO SANTALPUR CUT OFF POINT (AP 51)) | |
| CLIENT: M/S Power Grid Corporation of India Ltd WR-II, Vadodra | |
| CONTRACTOR: M/S. N. K. ENTERPRISES 207, 2/30 Ghazalabad-201010 (U.P) | FOR POWER GRID CORPORATION OF INDIA LTD |
| FOR M/S. N. K. ENTERPRISES: | FOR POWER GRID CORPORATION OF INDIA LTD |
| Surveyed By: | Checked By: |
| Checked By: | Recommended By: |
| Submitted By: | Approved By: |