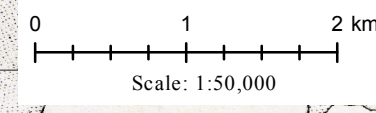
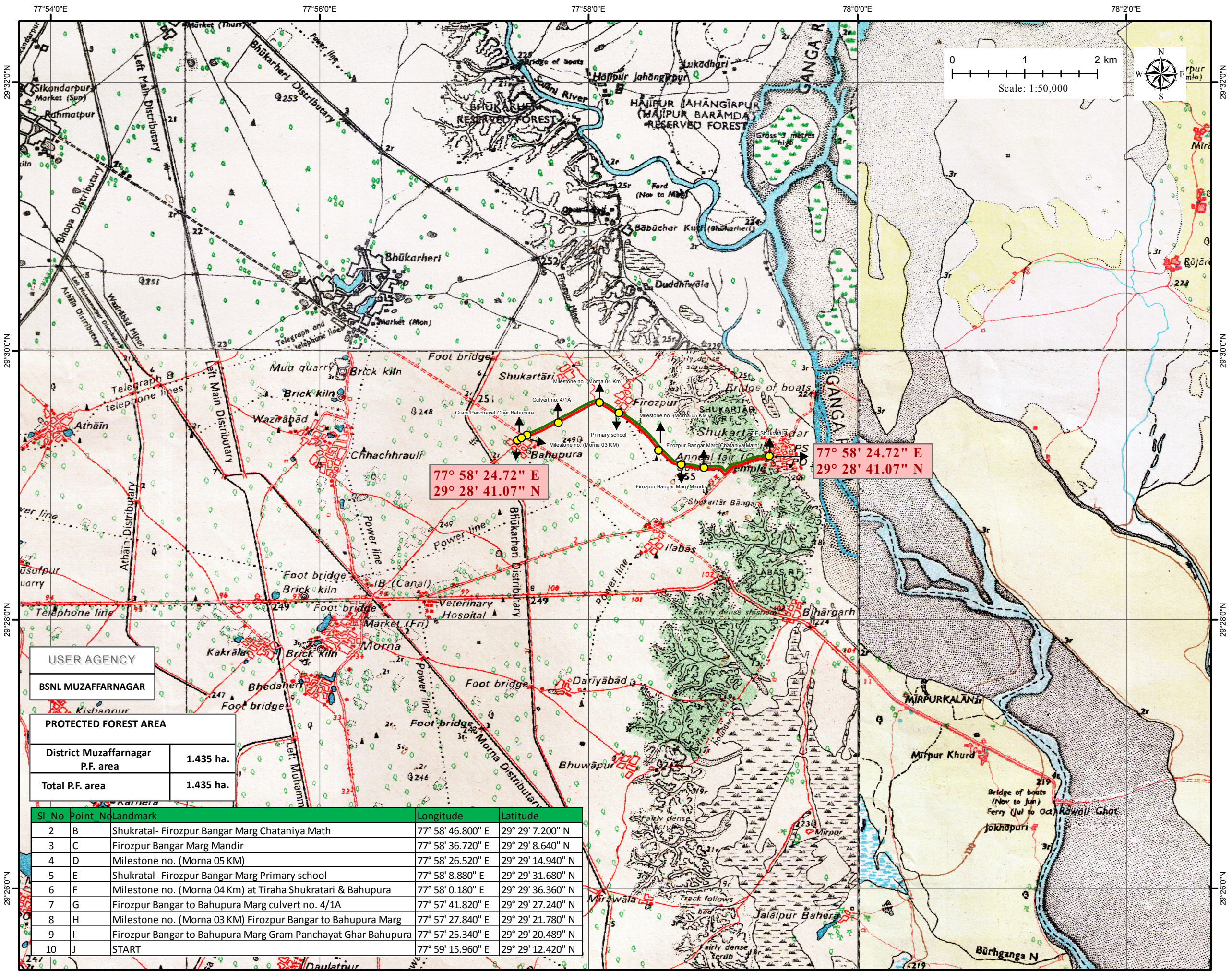


TOPO SHEET MAP FOR DIVERSION OF PF LAND FOR LAYING OF BSNL OFCABLE ON R.H.S OF SHUKRATAL TO FIROZPUR BANGAR MARG (TOTAL 3.7 KM IN DISTRICT MUZAFFARNAGAR) OFC LAYING WORK. ROUTE NAME SHUKRATAL TO FIROZPUR BANGAR MARG

TOPOSHEET  
53 G14, 53 G15  
53 K02, 53 K03



77° 58' 24.72" E  
29° 28' 41.07" N

77° 58' 24.72" E  
29° 28' 41.07" N

USER AGENCY	
BSNL MUZAFFARNAGAR	
PROTECTED FOREST AREA	
District Muzaffarnagar P.F. area	1.435 ha.
Total P.F. area	1.435 ha.

Sl No	Point No	Landmark	Longitude	Latitude
2	B	Shukratal- Firozpur Bangar Marg Chataniya Math	77° 58' 46.800" E	29° 29' 7.200" N
3	C	Firozpur Bangar Marg Mandir	77° 58' 36.720" E	29° 29' 8.640" N
4	D	Milestone no. (Morna 05 KM)	77° 58' 26.520" E	29° 29' 14.940" N
5	E	Shukratal- Firozpur Bangar Marg Primary school	77° 58' 8.880" E	29° 29' 31.680" N
6	F	Milestone no. (Morna 04 Km) at Tiraha Shukratari & Bahupura	77° 58' 0.180" E	29° 29' 36.360" N
7	G	Firozpur Bangar to Bahupura Marg culvert no. 4/1A	77° 57' 41.820" E	29° 29' 27.240" N
8	H	Milestone no. (Morna 03 KM) Firozpur Bangar to Bahupura Marg	77° 57' 27.840" E	29° 29' 21.780" N
9	I	Firozpur Bangar to Bahupura Marg Gram Panchayat Ghar Bahupura	77° 57' 25.340" E	29° 29' 20.489" N
10	J	START	77° 59' 15.960" E	29° 29' 12.420" N

77°54'0"E      77°56'0"E      77°58'0"E      78°0'0"E      78°2'0"E

29°26'0"N      29°28'0"N      29°30'0"N      29°32'0"N

Proposed Cable Alignment      GPS Coordinate Location

Protected Forest Streep