

- Towns or villages: checked according to Part
- Rail: passenger, stopovers, Tones, Annapurna
- Terrace, Obelisk, Church, Mosque, Ghat, Tank, Dams
- Lighthouse, Lightship, Buoy, Lighter, Anchorage
- Map: Use in India, China, Tibet
- Water: passing, other, Ponds, Canals, Swamps, Other lakes
- Areas: cultivated, wooded, Barren, etc.
- Boundaries: international
- new demarcated international
- India: national, India or SIAI line
- Boundary pillars: concrete, uncoloured, village signposts
- Height: triangulated station, spot, approximate
- BM 63 3
- BM 63 3
- Peak office, Telegraph office, Overhead tank
- Real level of Inspector, Bangalore, Ghent from India station
- Camping ground, Forest reserved, protected
- Special names: administrative locality or title
- Hospital, Dispensary, Veterinary hospital
- Airfields: Helipad, Turfite site
- Power line: with poles surveyed, with poles un-surveyed

REFERENCE
Dep. Deception

NOTES :-

Contours are approximate.
 Heights are in metres and above Indian mean sea level.
 Important buildings are shown in red with names.
 Townships are surveyed through the Survey of India.
 A relative height, e.g. 50, means 50 metres above the adjacent country.
 A relative height, e.g. 50, against a well, or tank, indicates the depth of the well or tank from the adjacent country.
 Unsettled tracks and cart-roads in this area are generally unsuitable in dry seasons. Permission to use these along certain is required from the Indian authorities.
 Tanks shown on this map are usually certain from July to December.
 1:50,000 topographic sheets of the India Geo-Spatial Data Centre are shown as tertiary search marks.

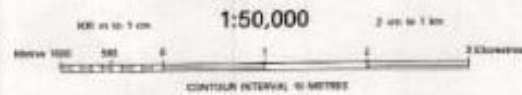
COMPILATION INDEX

A. Surveyed during 1951-52. Updated for major details during 2001-06.



Projection - UTM Datum - WGS 84

Magnetic Variation from True North about 1/2° East in 2005.
(According to above 1° annual)

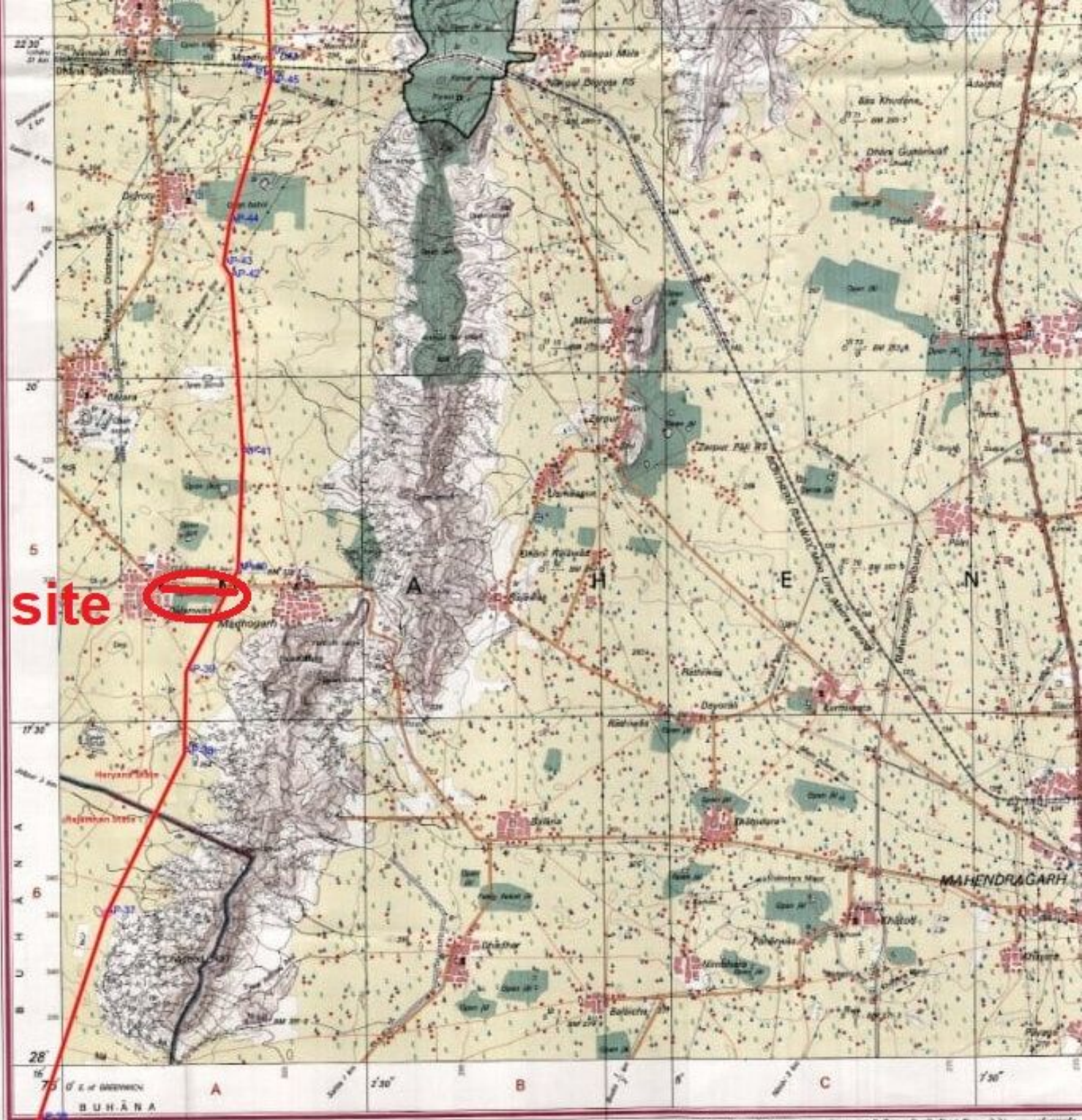


CONTOUR INTERVAL: 10 METRES

For further details about this map please contact
 Director
 Haryana Geo-Spatial Data Centre
 Survey of India, Sector 32 A
 Chandigarh.
 Fax : 0172 - 260487

WEBSITE - www.surveyofindia.gov.in

Reproduction in whole or part by any means is prohibited without the written permission of Survey of India, the National Mapping Agency.



Scale: 1:50,000

Published under the direction of Major General M. Gopal Rao, B.Tech., P.G.Dip. (Aerial Photo Survey of India, HSRBarkala Estate, Post Box No. 37, Dehra Dun Department of Science & Technology, Government of India.