

JUSTIFICATION OF THE PROJECT

BRIEF REPORT ON PARNA MINOR IRRIGATION PROJECT

Parna Minor Tank project is proposed to be constructed on local nalla a tributary of river Byarma which finally joins river Ken. The Ken river is a tributary of Yamuna river. The project is situated in Jabera Block of Damoh District and is 10 Km. from Block Head quarter & 55 Km. from District Head Quarter. The Parna dam envisages construction of 23.95 m. high and 1320 m. long earthen dam including 103.00 m. flush bar type waste weir near village Parna of Damoh District of Madhya Pradesh. It is designed to store 5.42 Mcum. Live storage of water to provide irrigation to command area of 950 Ha (CCA) through a well planned canal network. There is no intercepted catchment area at Parna Dam site and full catchment i.e. 20.59 Sqkms. Entirely lies in State of Madhya Pradesh. Similarly entire submergence at FTL and MWL and fill gross command area of 1100 Ha. Lies in Madhya Pradesh.


(R.C. Tiwari)

Executive Engineer

Water Resources Division Damoh

India is the gift NOT FOR EXPORT
OPEN SERIES MAP
No. F44B10
 Scale 1:50,000

F44B5 (2047)	F44B9 (2047)	F44B13 (2047)
F44B6 (2047)	F44B10 (2047)	F44B14 (2047)
F44B7 (2047)	F44B11 (2047)	F44B15 (2047)

1. Name, Location, etc.
 2. Name, Location, etc.
 3. Name, Location, etc.

सर्वेक्षण विभाग
SURVEY OF INDIA
 50 Edition 2015, Sheet No. 977

CONVENTIONAL SYMBOLS

1. Major boundary line	2. Minor boundary line	3. Boundary line	4. Boundary line
5. Boundary line	6. Boundary line	7. Boundary line	8. Boundary line
9. Boundary line	10. Boundary line	11. Boundary line	12. Boundary line
13. Boundary line	14. Boundary line	15. Boundary line	16. Boundary line
17. Boundary line	18. Boundary line	19. Boundary line	20. Boundary line
21. Boundary line	22. Boundary line	23. Boundary line	24. Boundary line
25. Boundary line	26. Boundary line	27. Boundary line	28. Boundary line
29. Boundary line	30. Boundary line	31. Boundary line	32. Boundary line
33. Boundary line	34. Boundary line	35. Boundary line	36. Boundary line
37. Boundary line	38. Boundary line	39. Boundary line	40. Boundary line
41. Boundary line	42. Boundary line	43. Boundary line	44. Boundary line
45. Boundary line	46. Boundary line	47. Boundary line	48. Boundary line
49. Boundary line	50. Boundary line	51. Boundary line	52. Boundary line
53. Boundary line	54. Boundary line	55. Boundary line	56. Boundary line
57. Boundary line	58. Boundary line	59. Boundary line	60. Boundary line
61. Boundary line	62. Boundary line	63. Boundary line	64. Boundary line
65. Boundary line	66. Boundary line	67. Boundary line	68. Boundary line
69. Boundary line	70. Boundary line	71. Boundary line	72. Boundary line
73. Boundary line	74. Boundary line	75. Boundary line	76. Boundary line
77. Boundary line	78. Boundary line	79. Boundary line	80. Boundary line
81. Boundary line	82. Boundary line	83. Boundary line	84. Boundary line
85. Boundary line	86. Boundary line	87. Boundary line	88. Boundary line
89. Boundary line	90. Boundary line	91. Boundary line	92. Boundary line
93. Boundary line	94. Boundary line	95. Boundary line	96. Boundary line
97. Boundary line	98. Boundary line	99. Boundary line	100. Boundary line

INDEX
 Alternate-1 Suitable
 Forest 55.30 ha.
 Irrigated Ares- 950 ha
 Cost – 2816.45 lakh

Alternate-2 Not Suitable
 Forest 60.50 ha.
 Irrigated Ares- 980 ha
 Cost – 2923.10 lakh

Alternate-3 Not Suitable
 Forest 66.90 ha.
 Irrigated Ares- 1030 ha
 Cost – 3083.37 lakh

India is the gift NOT FOR EXPORT
OPEN SERIES MAP
No. F44B11
 Scale 1:50,000

F44B6 (2047)	F44B10 (2047)	F44B14 (2047)
F44B7 (2047)	F44B11 (2047)	F44B15 (2047)
F44B8 (2047)	F44B12 (2047)	F44B16 (2047)

1. Name, Location, etc.
 2. Name, Location, etc.
 3. Name, Location, etc.

CONVENTIONAL SYMBOLS

1. Major boundary line	2. Minor boundary line	3. Boundary line	4. Boundary line
5. Boundary line	6. Boundary line	7. Boundary line	8. Boundary line
9. Boundary line	10. Boundary line	11. Boundary line	12. Boundary line
13. Boundary line	14. Boundary line	15. Boundary line	16. Boundary line
17. Boundary line	18. Boundary line	19. Boundary line	20. Boundary line
21. Boundary line	22. Boundary line	23. Boundary line	24. Boundary line
25. Boundary line	26. Boundary line	27. Boundary line	28. Boundary line
29. Boundary line	30. Boundary line	31. Boundary line	32. Boundary line
33. Boundary line	34. Boundary line	35. Boundary line	36. Boundary line
37. Boundary line	38. Boundary line	39. Boundary line	40. Boundary line
41. Boundary line	42. Boundary line	43. Boundary line	44. Boundary line
45. Boundary line	46. Boundary line	47. Boundary line	48. Boundary line
49. Boundary line	50. Boundary line	51. Boundary line	52. Boundary line
53. Boundary line	54. Boundary line	55. Boundary line	56. Boundary line
57. Boundary line	58. Boundary line	59. Boundary line	60. Boundary line
61. Boundary line	62. Boundary line	63. Boundary line	64. Boundary line
65. Boundary line	66. Boundary line	67. Boundary line	68. Boundary line
69. Boundary line	70. Boundary line	71. Boundary line	72. Boundary line
73. Boundary line	74. Boundary line	75. Boundary line	76. Boundary line
77. Boundary line	78. Boundary line	79. Boundary line	80. Boundary line
81. Boundary line	82. Boundary line	83. Boundary line	84. Boundary line
85. Boundary line	86. Boundary line	87. Boundary line	88. Boundary line
89. Boundary line	90. Boundary line	91. Boundary line	92. Boundary line
93. Boundary line	94. Boundary line	95. Boundary line	96. Boundary line
97. Boundary line	98. Boundary line	99. Boundary line	100. Boundary line

CONVENTIONAL SYMBOLS

1. Major boundary line	2. Minor boundary line	3. Boundary line	4. Boundary line
5. Boundary line	6. Boundary line	7. Boundary line	8. Boundary line
9. Boundary line	10. Boundary line	11. Boundary line	12. Boundary line
13. Boundary line	14. Boundary line	15. Boundary line	16. Boundary line
17. Boundary line	18. Boundary line	19. Boundary line	20. Boundary line
21. Boundary line	22. Boundary line	23. Boundary line	24. Boundary line
25. Boundary line	26. Boundary line	27. Boundary line	28. Boundary line
29. Boundary line	30. Boundary line	31. Boundary line	32. Boundary line
33. Boundary line	34. Boundary line	35. Boundary line	36. Boundary line
37. Boundary line	38. Boundary line	39. Boundary line	40. Boundary line
41. Boundary line	42. Boundary line	43. Boundary line	44. Boundary line
45. Boundary line	46. Boundary line	47. Boundary line	48. Boundary line
49. Boundary line	50. Boundary line	51. Boundary line	52. Boundary line
53. Boundary line	54. Boundary line	55. Boundary line	56. Boundary line
57. Boundary line	58. Boundary line	59. Boundary line	60. Boundary line
61. Boundary line	62. Boundary line	63. Boundary line	64. Boundary line
65. Boundary line	66. Boundary line	67. Boundary line	68. Boundary line
69. Boundary line	70. Boundary line	71. Boundary line	72. Boundary line
73. Boundary line	74. Boundary line	75. Boundary line	76. Boundary line
77. Boundary line	78. Boundary line	79. Boundary line	80. Boundary line
81. Boundary line	82. Boundary line	83. Boundary line	84. Boundary line
85. Boundary line	86. Boundary line	87. Boundary line	88. Boundary line
89. Boundary line	90. Boundary line	91. Boundary line	92. Boundary line
93. Boundary line	94. Boundary line	95. Boundary line	96. Boundary line
97. Boundary line	98. Boundary line	99. Boundary line	100. Boundary line

NOTES
 1. The map is based on the Survey of India's 50th Edition of the 1:50,000 scale map of the area.
 2. The map is based on the Survey of India's 50th Edition of the 1:50,000 scale map of the area.
 3. The map is based on the Survey of India's 50th Edition of the 1:50,000 scale map of the area.

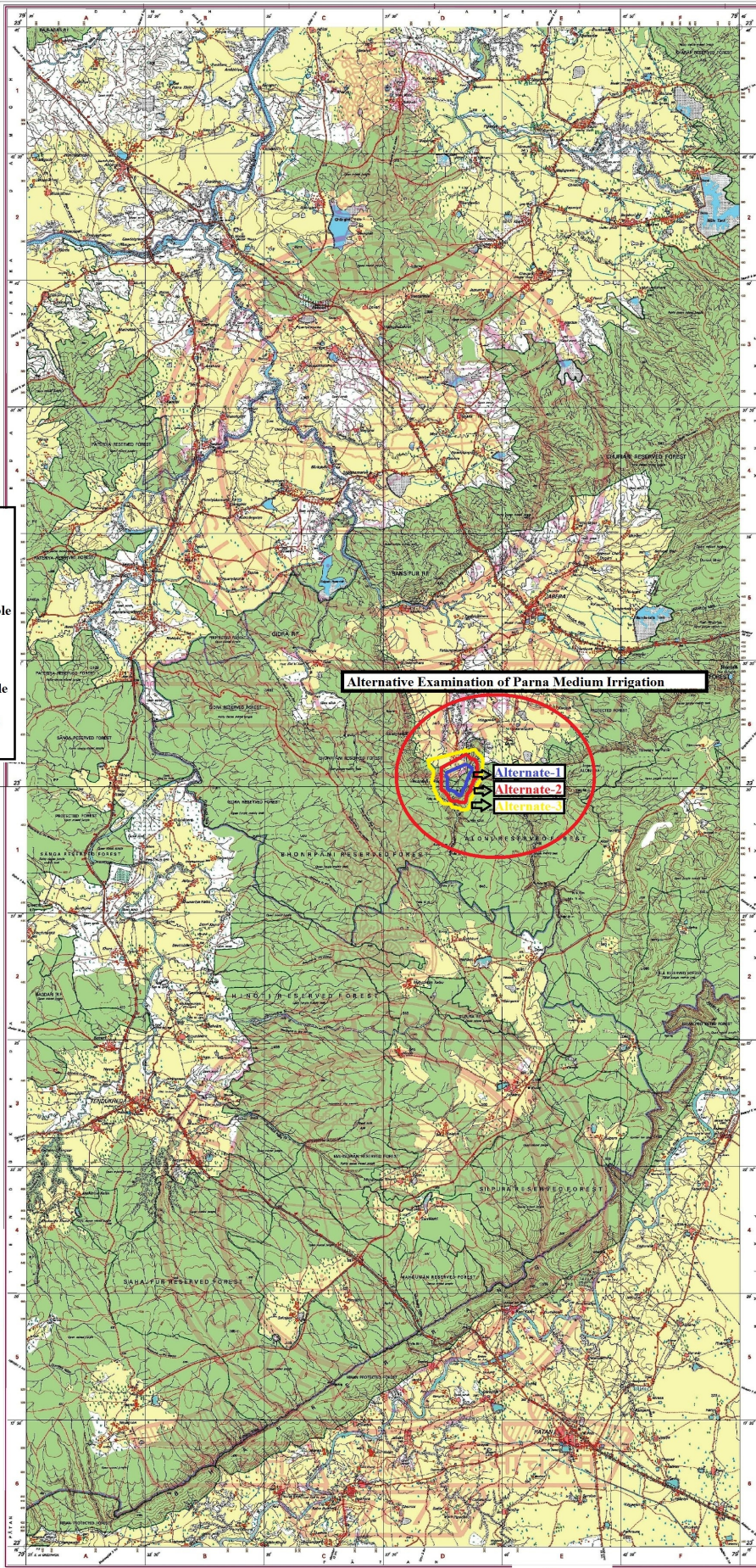
PROJECTION
 Projection - UTM
 Datum - WGS 84
 Map Scale - 1:50,000
 Sheet Size - 10 cm x 10 cm
 Map No. - F44B10
 Sheet No. - 977

PROJECTION
 Projection - UTM
 Datum - WGS 84
 Map Scale - 1:50,000
 Sheet Size - 10 cm x 10 cm
 Map No. - F44B10
 Sheet No. - 977

PROJECTION
 Projection - UTM
 Datum - WGS 84
 Map Scale - 1:50,000
 Sheet Size - 10 cm x 10 cm
 Map No. - F44B10
 Sheet No. - 977

PROJECTION
 Projection - UTM
 Datum - WGS 84
 Map Scale - 1:50,000
 Sheet Size - 10 cm x 10 cm
 Map No. - F44B10
 Sheet No. - 977

PROJECTION
 Projection - UTM
 Datum - WGS 84
 Map Scale - 1:50,000
 Sheet Size - 10 cm x 10 cm
 Map No. - F44B10
 Sheet No. - 977



Alternative Examination of Parna Medium Irrigation

Alternate-1
Alternate-2
Alternate-3

Map is published under the Survey of India's 50th Edition of the 1:50,000 scale map of the area.
 Map is published under the Survey of India's 50th Edition of the 1:50,000 scale map of the area.
 Map is published under the Survey of India's 50th Edition of the 1:50,000 scale map of the area.

न्यूनतम वनक्षेत्र प्रभावित होने के संबंध में तुलनात्मक दृष्टि से न्यूनतम तीन ऐसे वैकल्पिक परीक्षणों का उपयुक्त स्केल के नक्शे पर दर्शाते हुये उनकी परीक्षाणात्मक टीप

स. क्र.	कक्ष क्र.	प्रभावित वन क्षेत्र हे० में	परियोजना की लागत लाख में	जल ग्रहण क्षमता MCum में	सिंचित क्षेत्र का विवरण हेक्टेयर में	टीप
A	PF-62 RF-320 PF- 321	55.30	2816.45	5.42	950	लाभ की दृष्टि से उपयुक्त हैं
B	-do-	60.50	2923.10	5.49	980	लागत के अनुपात में लाभ कम होने से अनुपयुक्त है।
C	-do-	66.90	3083.37	6.21	1030	लागत के अनुपात में लाभ कम होने से अनुपयुक्त है।


 (R.C. Tiwari)
 Executive Engineer
 Water Resources Division Damoh