

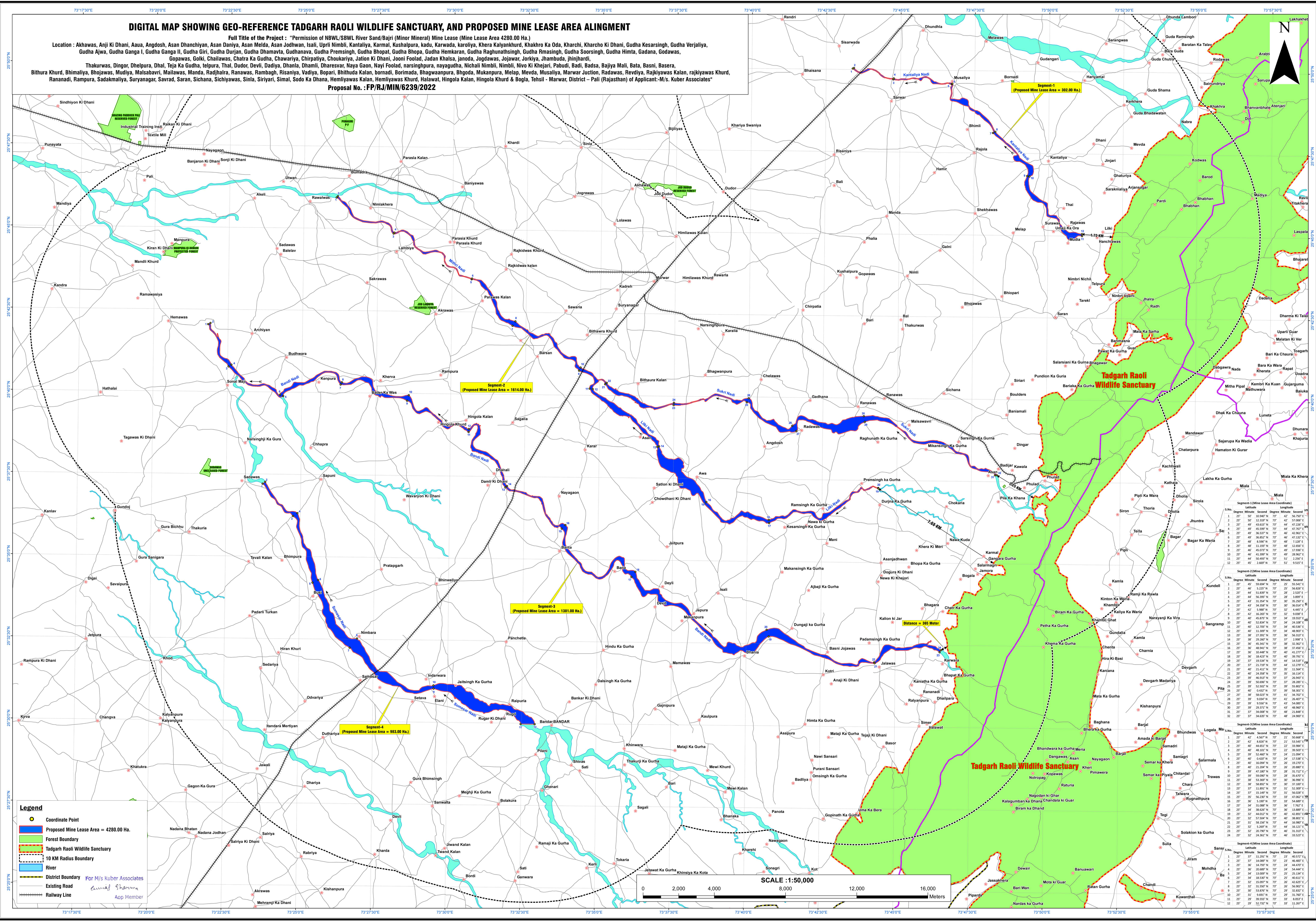
# DIGITAL MAP SHOWING GEO-REFERENCE TADGARH RAOLI WILDLIFE SANCTUARY, AND PROPOSED MINE LEASE AREA ALIGNMENT

Full Title of the Project : "Permission of NBWL/SBWL River Sand/Bajri (Minor Mineral) Mine Lease (Mine Lease Area 4280.00 Ha.)

Location : Akhawas, Anji Ki Dhani, Aau, Angdosh, Asan Dhanchiyar, Asan Daniya, Asan Melda, Asan Jodhan, Isali, Uprhi Nimbi, Kantaliya, Karmal, Kushalpara, kadu, Karwada, karoliya, Khera Kalyankhurd, Khakhro Ka Oda, Kharchi, Kharcho Ki Dhani, Gudha Kesarsingh, Gudha Verjaliya, Gudha Ajwa, Gudha Ganga I, Gudha Ganga II, Gudha Durjan, Gudha Dhamavta, Gudhanava, Gudha Premisingh, Gudha Bhopat, Gudha Bhopa, Gudha Hemkaran, Gudha Raghunathisingh, Gudha Rmasingh, Gudha Soorsingh, Gudha Himta, Gadana, Godawas,

Gopawas, Golki, Chailawas, Chakra Ka Gudha, Chawariya, Chirpatiya, Choukariya, Jaton Ki Dhani, Jooni Foolad, Jadan Khalsa, Janoda, Jodgawas, Jujawar, Jorkiya, Jhambuda, Jhijharoti, Thakurwas, Dingor, Dhehpura, Dhal, Teja Ka Gudha, telpura, Thal, Dudor, Devil, Dadiya, Dhanila, Dhani, Dharsavar, Naya Gaon, Nayi Foolad, narsinghpura, nayagudha, Nichali Nimbi, Nimbi Ki Khejari, Pabudi, Bari, Bada, Baiya Mali, Bata, Basni, Basera, Bithura Khurd, Bhimaliya, Bhojawas, Mudiya, Malsabari, Mallawas, Manda, Radjalra, Ranawas, Bopari, Bithuda Kalan, Bomadi, Borimada, Bhagwanpura, Bhogda, Mukanpura, Melap, Mevda, Musaliya, Marwar Junction, Radawas, Revdiya, Rajkiywas Kalan, rajkiywas Khurd, Rananadi, Rampura, Sadakmaliya, Suryanagar, Savrad, Saran, Sichana, Sichiyaawas, Sinla, Siriyari, Simal, Sodo Ka Dhana, Hemliyawas Kalan, Hemliyawas Khurd, Halawat, Hingola Kalan, Hingola Khurd & Bogla, Tehsil - Marwar, District - Pali (Rajasthan) of Applicant:-M/s. Kuber Associates"

Proposal No. : FP/RJ/MIN/6239/2022



Segment-1 (Mine Lease Area Coordinates)

S.No.	Degree	Minute	Second	Degree	Minute	Second	Latitude	Longitude
1	25	50	50	73	47	50	25.8444° N	73.7972° E
2	25	50	52	73	47	50	25.8444° N	73.7972° E
3	25	50	54	73	47	50	25.8444° N	73.7972° E
4	25	50	56	73	47	50	25.8444° N	73.7972° E
5	25	50	58	73	47	50	25.8444° N	73.7972° E
6	25	50	60	73	47	50	25.8444° N	73.7972° E
7	25	50	62	73	47	50	25.8444° N	73.7972° E
8	25	50	64	73	47	50	25.8444° N	73.7972° E
9	25	50	66	73	47	50	25.8444° N	73.7972° E
10	25	50	68	73	47	50	25.8444° N	73.7972° E
11	25	50	70	73	47	50	25.8444° N	73.7972° E
12	25	50	72	73	47	50	25.8444° N	73.7972° E

Segment-2 (Mine Lease Area Coordinates)

S.No.	Degree	Minute	Second	Degree	Minute	Second	Latitude	Longitude
1	25	40	50	73	25	50	25.6778° N	73.4278° E
2	25	40	52	73	25	50	25.6778° N	73.4278° E
3	25	40	54	73	25	50	25.6778° N	73.4278° E
4	25	40	56	73	25	50	25.6778° N	73.4278° E
5	25	40	58	73	25	50	25.6778° N	73.4278° E
6	25	40	60	73	25	50	25.6778° N	73.4278° E
7	25	40	62	73	25	50	25.6778° N	73.4278° E
8	25	40	64	73	25	50	25.6778° N	73.4278° E
9	25	40	66	73	25	50	25.6778° N	73.4278° E
10	25	40	68	73	25	50	25.6778° N	73.4278° E
11	25	40	70	73	25	50	25.6778° N	73.4278° E
12	25	40	72	73	25	50	25.6778° N	73.4278° E

Segment-3 (Mine Lease Area Coordinates)

S.No.	Degree	Minute	Second	Degree	Minute	Second	Latitude	Longitude
1	25	40	50	73	21	50	25.6778° N	73.3639° E
2	25	40	52	73	21	50	25.6778° N	73.3639° E
3	25	40	54	73	21	50	25.6778° N	73.3639° E
4	25	40	56	73	21	50	25.6778° N	73.3639° E
5	25	40	58	73	21	50	25.6778° N	73.3639° E
6	25	40	60	73	21	50	25.6778° N	73.3639° E
7	25	40	62	73	21	50	25.6778° N	73.3639° E
8	25	40	64	73	21	50	25.6778° N	73.3639° E
9	25	40	66	73	21	50	25.6778° N	73.3639° E
10	25	40	68	73	21	50	25.6778° N	73.3639° E
11	25	40	70	73	21	50	25.6778° N	73.3639° E
12	25	40	72	73	21	50	25.6778° N	73.3639° E

Segment-4 (Mine Lease Area Coordinates)

S.No.	Degree	Minute	Second	Degree	Minute	Second	Latitude	Longitude
1	25	37	50	73	21	50	25.6167° N	73.3639° E
2	25	37	52	73	21	50	25.6167° N	73.3639° E
3	25	37	54	73	21	50	25.6167° N	73.3639° E
4	25	37	56	73	21	50	25.6167° N	73.3639° E
5	25	37	58	73	21	50	25.6167° N	73.3639° E
6	25	37	60	73	21	50	25.6167° N	73.3639° E
7	25	37	62	73	21	50	25.6167° N	73.3639° E
8	25	37	64	73	21	50	25.6167° N	73.3639° E
9	25	37	66	73	21	50	25.6167° N	73.3639° E
10	25	37	68	73	21	50	25.6167° N	73.3639° E
11	25	37	70	73	21	50	25.6167° N	73.3639° E
12	25	37	72	73	21	50	25.6167° N	73.3639° E

**Legend**

- Coordinate Point
- Proposed Mine Lease Area = 4280.00 Ha.
- Forest Boundary
- Tadgarh Raoli Wildlife Sanctuary
- 10 KM Radius Boundary
- River
- District Boundary
- Existing Road
- Railway Line

For M/s Kuber Associates  
Aop Member

